

www.knaufegypt.com

KNAUF



**Knauf
Solutions
Booklet
2017**

KNAUF

Knauf
Solutions
Booklet
2017

KNAUF

Knauf Background



“ Great companies often spring from one small idea

Great companies often spring from one small idea. And so it was with Knauf.

When brothers and mining engineers, Alfons and Karl Knauf secured the rights to mine gypsum deposits in Obermosel, Germany in 1932 it was the first step towards creating what is now a global name in the world of building products and solutions. By 1933 the first Knauf factory had been inaugurated in Perl, in the Moselle area of Germany. To this day, the same location serves as a hub of Knauf production technology.

With the formation of the Federal Republic of Germany in 1949 the main production moved to a new factory in Iphofen, in northern Bavaria, where it still proudly stands today. By 1958 this family-owned business, already committed to an innovative approach to building systems and materials, developed a totally new type of gypsum board.

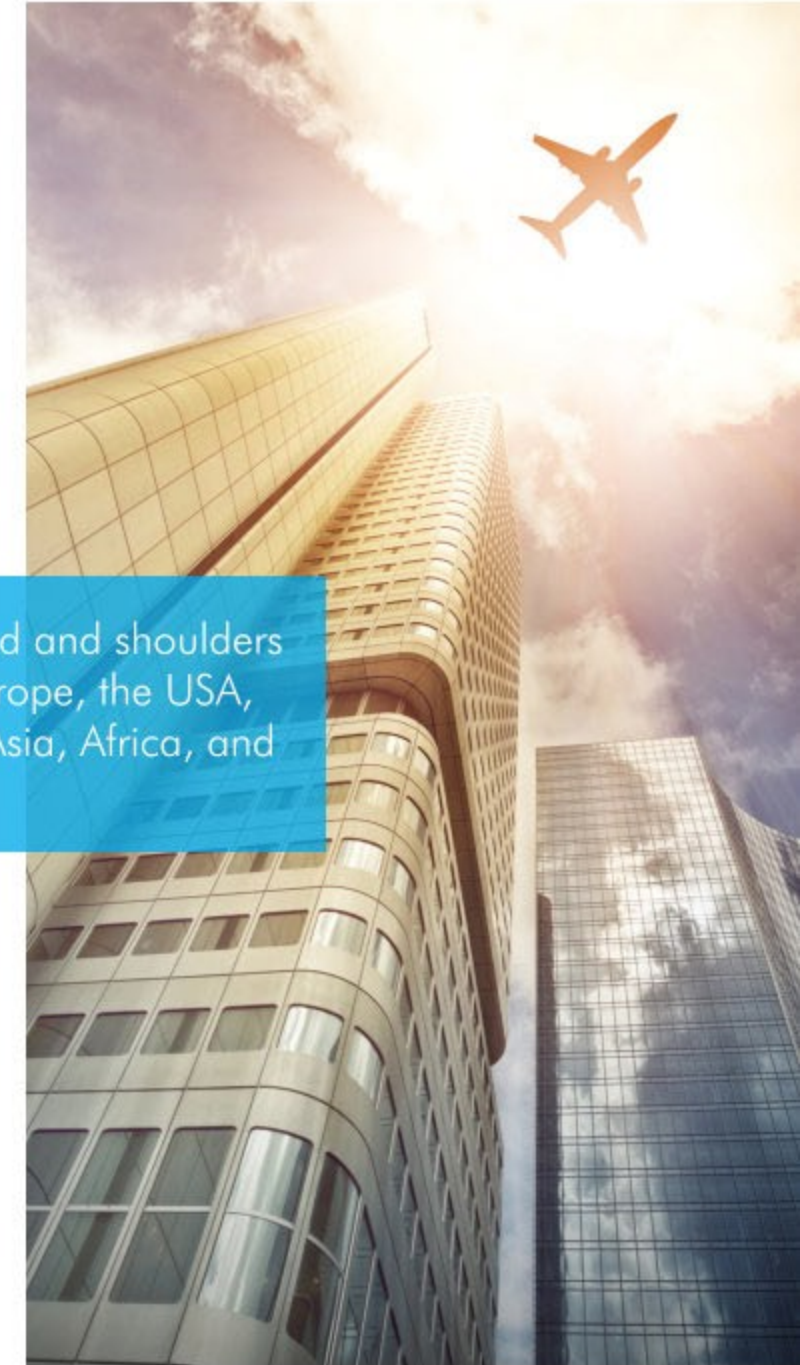
The path forward saw step after step of new techniques, new components, and new insulation products like the glass wool facility

obtained by Knauf in 1978. In 2008 management passed to the next generation, with sons of the founders, Niklaus and Baldwin Knauf taking the reins of what was now a thriving, diversified partner in the revolutionised construction field.

Knauf Group is now expertly headed by Manfred Grunke and Alexander Knauf, continuing the guiding ethos of commitment, environmental sustainability, integrity, and entrepreneurial skills that has made the company the success it is today.

“ Knauf Group stands head and shoulders above the crowd – in Europe, the USA, South America, Russia, Asia, Africa, and Australia.

Knauf currently supplies modern insulation materials, drylining systems, plasters and accessories, thermal insulation composite systems, paints, floor screed, floor systems, and construction equipment and tools through 150 production facilities and sales organisations in over 60 countries. With 26,000 employees worldwide, and sales of 6.27 billion Euro (in 2013), Knauf Group stands head and shoulders above the crowd – in Europe, the USA, South America, Russia, Asia, Africa, and Australia.



Knauf Egypt



Knauf Egypt was formed in 1998 as a representative office at a time when the building industry was facing a huge surge.

A rapidly growing population had to be met with housing, commercial and educational facilities, medical centres and hospitals. Traditional construction methods had become slow, labour intensive and impractical in many instances. It was time to look towards the future of construction.

Working first with distribution, supported by technical assistance for the distributors, consultants and contractors who used the products, Knauf Egypt grew quickly. The company quickly became known not just as a supplier of high quality German products, but also as a solution provider, with the knowledge and expertise to guide its customers.

2003 saw the formation of Knauf Egypt as a limited liability company with a ready and expanding market for specialised dry wall construction products.

Warehouse facilities formed a key element in the success of having a ready product supply.

In 2010, with an investment budget of 40 million Euros, Knauf Egypt established a state-of-the-art facility for the production of gypsum board, plaster products and metal profiles to supply not only the local needs, but also export to other regional countries.

Egypt is the only country in the whole region to reach maximum capacity in the first year of opening of the plant. Increased demand saw the production capacity double the following year.

Today, Knauf Egypt exports its products not only throughout Egypt, but also in neighboring Ethiopia, Jordan, Kenya, Sudan, Tanzania and Uganda.

“ Knauf Egypt was formed in 1998

Innovative Solutions Not Only Products

Knauf products have a track record that speaks for the brand. German quality, created through expert research, with systems that quite simply have brought construction techniques right-up-to-the-minute.

Art meets form in outstanding buildings around the globe, thanks to skilful solutions integrating Knauf products.

Innovation is Knauf's greatest strength, the ability to look clearly at the requirement and meet the technical scope with the right set of products and components.

The same thought and care goes into any customer's project, from a simple home to mega-structure.

The core essential is customer satisfaction, with a finished build that will withstand the elements and the test of time.

Knauf subsidiaries are also introducing innovative products into the marketplace.

In Australia products like the revolutionary roofing system Kventi can reduce the time needed to install a roof by 50%. JetSpray, a blowing wool, was created to insulate tricky corners and difficult to access spots, while Mineral Plus is a lightweight alternative to Rock Mineral Wool that can easily be tucked into awkward spaces.



Raw Materials

Quality starts with what goes into the finished product. Not only the quality of the actual material, but the quality of care for the environment, issues of sustainability, the impact on the community where it is sourced and extracted or created.

Knauf thinks on a large scale, where all components make a whole.

“ Quality starts with what goes into the finished product.



Gypsum

Blessed with good availability of gypsum in Egypt's Sinai region, Knauf Egypt grasped the opportunity to further expand its in-country activities in 2010 by utilizing this local source and building a plasterboard and gypsum plaster factory in the Ataq Industrial Zone in Suez.

This major investment of 50 million USD showed confidence in the country's development track and was purely self-financed.

In order to maintain its impeccable standards and consistent level of quality, Knauf constructed the factory in Suez with German equipment.

Protection of the environment again plays a role, the production process meets German standards, and no waste water or flue gases are produced during the process.

In spite of slight delays due to regional instability from time to time, the Knauf plasterboard factory started production at the end of August 2014 and is now meeting excellent production levels.

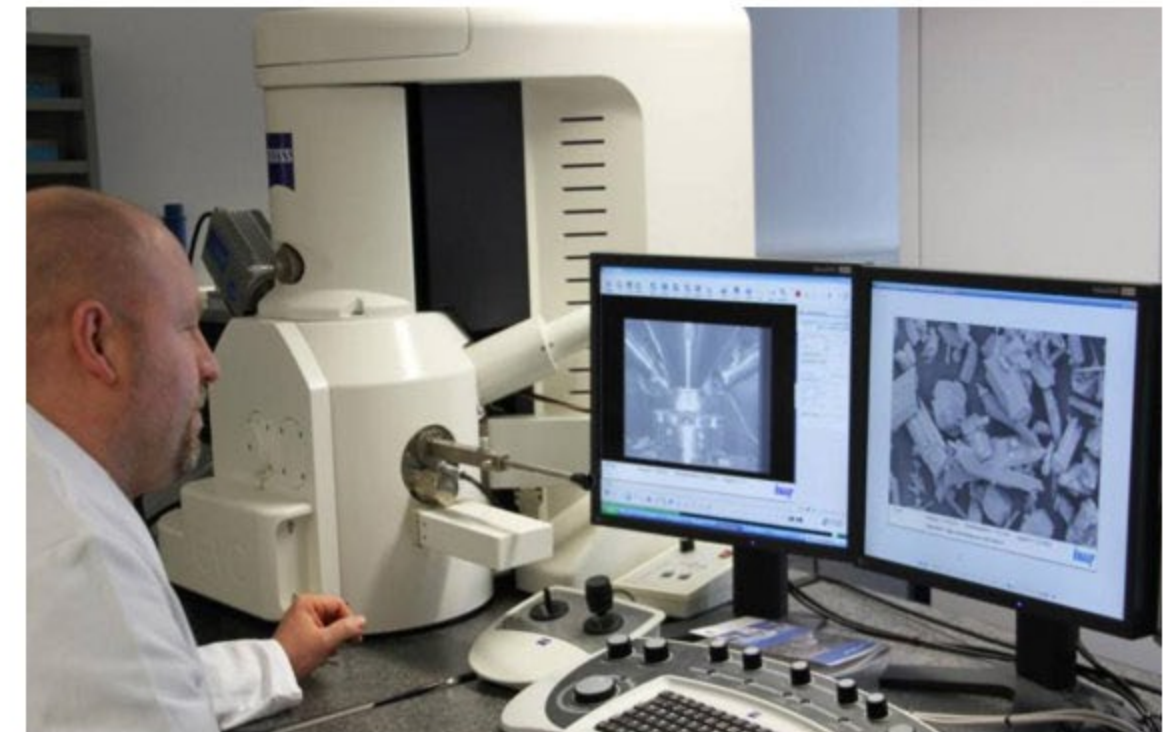


Research and Development

From its inception, Knauf has incorporated ongoing research and development as an important part of its company. Understanding that industry and progress cannot be sustained if the planet's resources are drained in the process, Knauf seeks out new materials and methods that support long term sustainability.

Knauf looks for environmentally viable solutions when creating and sourcing materials. Research is ongoing into creating ecologically sound structures, and with earthquakes still a problem around the world, the development of seismic resistant systems and materials.

Among the patents registered to Knauf one of the most exciting has to be that for ECOSE® technology. With many uses and variants it is set to be a big player in the construction industry.



German Quality .. Premium Quality

Germany has been known for outstanding achievements in the fields of science and technology since well back into the preceding century.

Boasting more Nobel prize-winners in the scientific field than any other nation Germany still stands at the forefront of innovation and expertise.

Management systems play a major role in maintaining consistently excellent products and solutions.

Knauf holds certification by LGA InterCert as well as meeting all the requirements of DIN EN 9001:2008.

Using these stringent standards as a benchmark Knauf can confidently gain customer satisfaction and global brand recognition.

“ Knauf Holds This
Tradition Proudly



Knauf Training

A vital benefit of being part of Knauf is the support and ongoing training for Knauf teams worldwide.

This in turn enables them to pass the knowledge and skills on to customers, contractors and their own technical teams.

Knauf Egypt launched a training scheme in 2009 and initially handled 200 trainees per year.

This has now expanded to 1500 trainees per year, with places already booked for the coming sessions next year.

Knauf also conducts exchange schemes, where employees from Knauf offices and plants from all continents can benefit from becoming part of the Knauf operation in Germany.

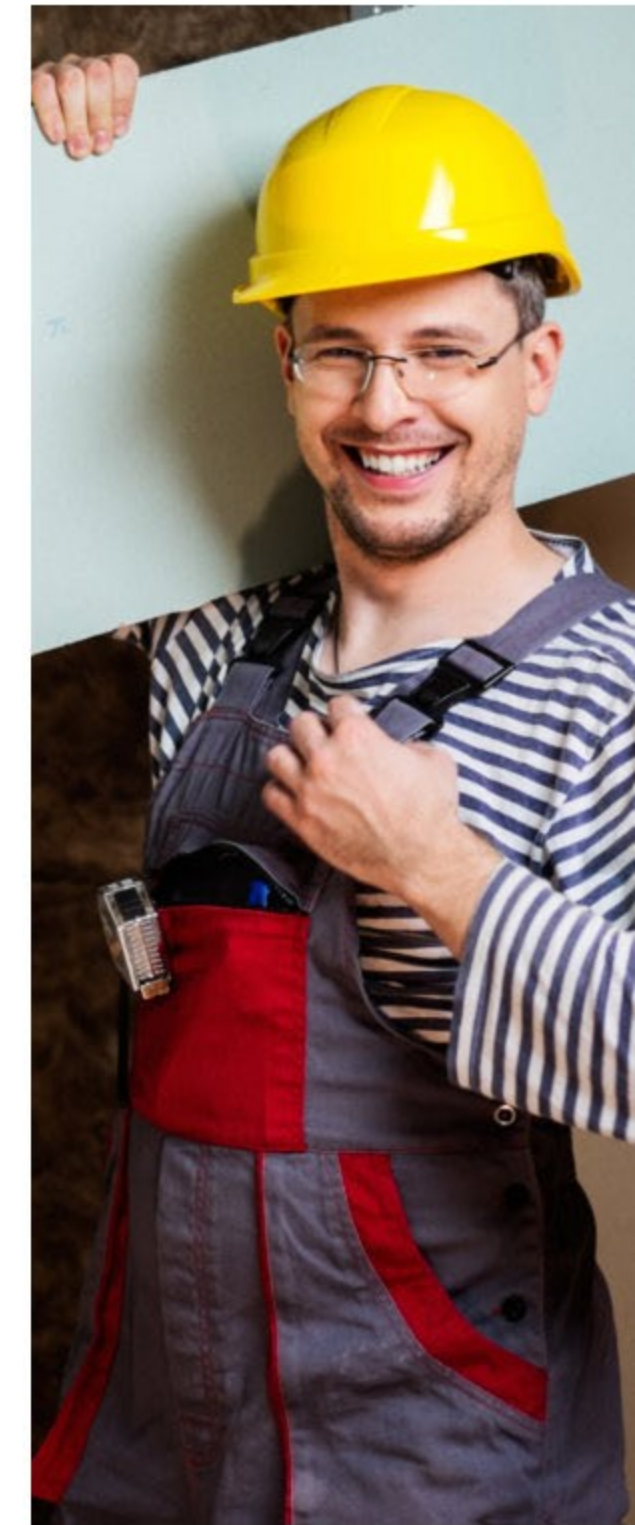
This enables them to become part of the exciting development process, while acquiring technical knowledge and language skills.

Taking things a step further, Knauf has its very own College, where participants from all over the Knauf global network have the opportunity to attend courses.

Attendees come from various Knauf departments, the course is geared to skills required by sales and marketing teams, product managers and technical commercial divisions.

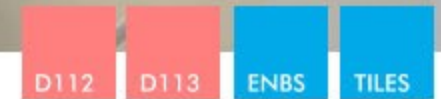
Courses are handled by two instructors from the Scuola Superiore Sant'Anna in Pisa, in addition to many distinguished guest speakers who come to share their experience.

These valuable sessions of three days brings up to 50 participants together to learn and brainstorm ways in which knowledge and information about Knauf products systems and solutions can be effectively disseminated in their own markets.





Knauf Suspended Ceilings



Knauf Suspended Ceilings are high-end systems that are manufactured in compliance with international building standards. Knauf offers a range of versatile and decorative ceiling systems, including demountable and smart solutions. Solutions: D112/D113 following EN-DIN, Solution: ENBS following ENBS, tiles following EN standards. Whatever the requirement, there will be a Knauf ceiling system to meet it.

Used for all types of interior ceiling installations, Knauf has a comprehensive inventory of suspended ceiling components. We can apply a wide range of different types of Knauf gypsum board, selecting the optimum solution for each application. Knauf Suspended Ceiling systems are supported by metal grids consisting of main carrying channels and secondary furring channels, creating a secure base, no matter what size or shape the ceiling may be.

Usage:

- Execution of various architectural designs.
- Decorative surface creation
- Concealing service and electrical wires after their installation.
- Hiding all concrete and main non-design related structural elements.
- Perfect solution for seismic requirements.
- Used in all types of interior ceiling installations: Entertainment, commercial, residential, administrative, shopping outlets, industrial, health care, hotels, educational, etc...

Optional Features:



Fire Resistant



Moisture Resistance



Sound insulation



Interior design

System Features:

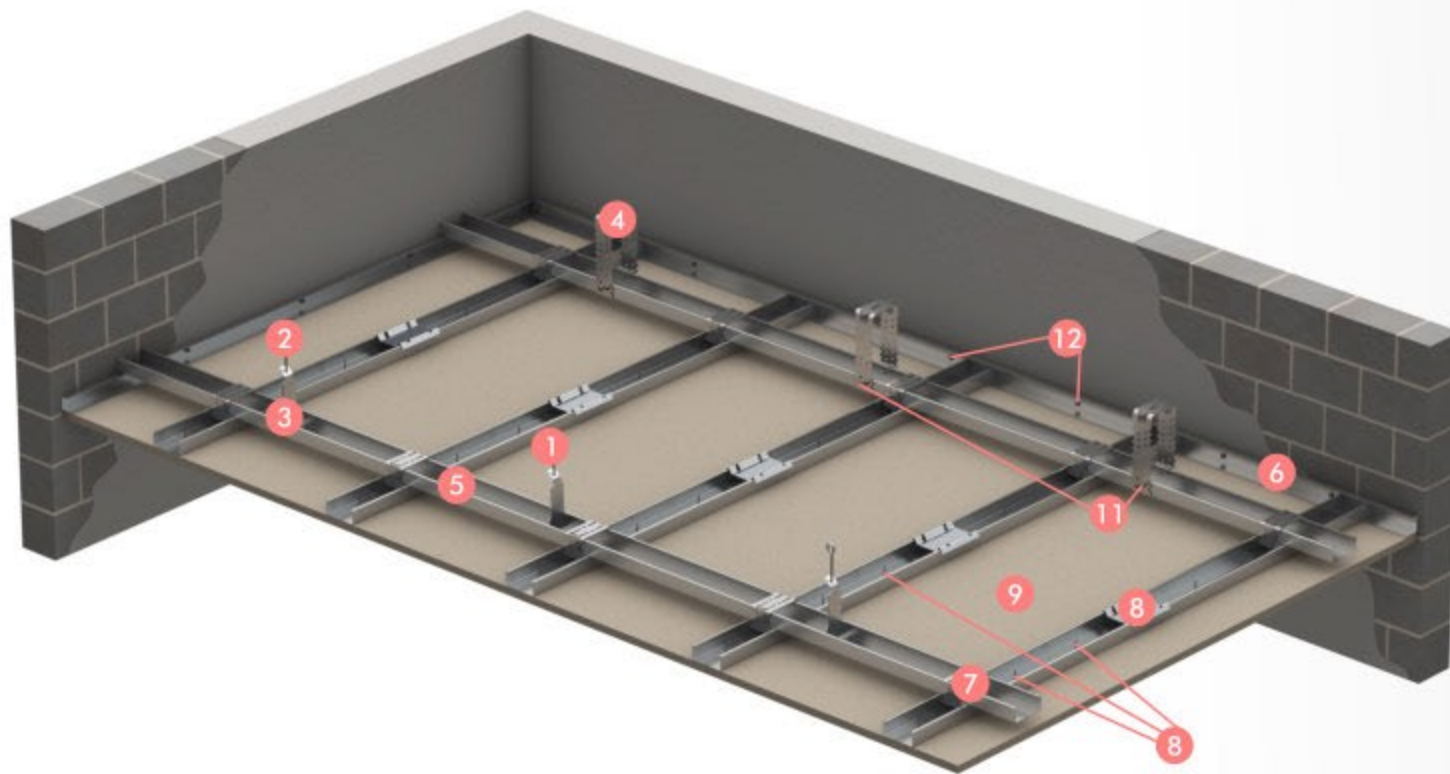
- Convenient, easy, fast and dry application. (DIY)
- Lightweight system constructions.
- Low impact on the bearing structure.
- Adapts to movements of the building.
- Environmentally friendly and LEED certified.
- Saves in painting costs, with its seamless smooth surface
- Meet very high performance requirements with minimum accessories.
- Requires minimum storage area
- Saves on transportation and labor

	D112	D113
Brief Description	The Knauf D112 is a Gypsum Board Suspended Ceiling System with metal grid consists of main/upper CD carrying channels and secondary/lower CD furring channels. UD profile as a perimeter angle.	The Knauf D113 is a Gypsum Board Suspended Ceiling System with metal grid consists of intersected flush grid of CD main and secondary channels, allowing limited ceiling depth. UD Profile as a perimeter angle.
Code	EN - DIN Standards	EN – DIN Standards
Components	<ul style="list-style-type: none"> • Screw pin fastner (anchor/wedge) • Wire with eyelet • Hanger with lock • Direct hamger • CD Channels • UD Profile • Cross connector • Monoconnector • Gypsum board • TN or TB Screw • LN or LB Screw • K6/35 • Fugagips • Fiber Mesh or Paper Tape 	<ul style="list-style-type: none"> • Screw pin fastner (anchor/wedge) • Wire with eyelet • Hanger with lock • Direct hamger • CD Channels • UD Profile • Universal connector or Flush Connector • Monoconnector • Gypsum board • TN or TB Screw • LN or LB Screw • K6/35 • Fugagips • Fiber Mesh or Paper Tape

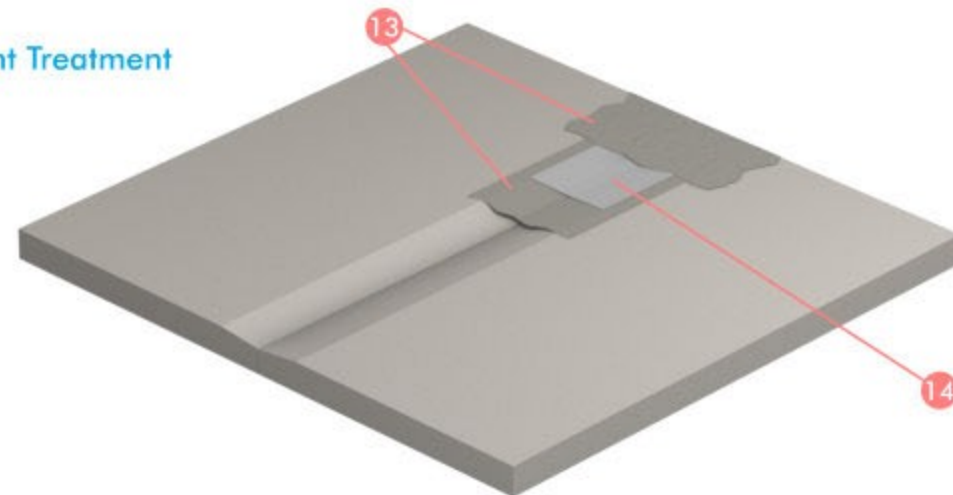
D112 | Metal Grid

The Knauf D112 Suspended Ceiling System consists of a substructure made of steel sheet profiles CD 60/27 as base and support profiles (double profile grate) or supporting profiles (simple profile grating) and a planking of gypsum boards. The decking system can be designed with or without fire protection in a variety of panels. This fire protection is available in the qualities F30 and F90.

Knauf boards are fixed with screws to a metal grid made of carrying and furring channels (double layer profile).



Joint Treatment



1 Screw Pin Fastener (Anchor/wedge)

Wedge anchor is a very easy to apply accessory which can be used as a best solution for suspending (hanging)(carrying) Knauf ceiling systems [D112,D113,ENBS and Tiles]. It can be used also in perimeter fixing for ceilings, and even for partitions where fire resistance is required.



8 M-Connector

Galvanized connector piece used for extending Knauf CD Channels in cases of long spanned ceilings



2 Wire With Eyelet

The wire with eyelet is a type of suspension that helps in leveling and accordingly can reach up to 4.5m depth. It loads up to 0.25 kN (25kg). In combination with the hanger with lock it offers quick installation and high flexibility.



9 Gypsum Board

Knauf wallboard is a plasterboard with an ivory/grey paper lining and is ideally suited to receive a plaster finish or a direct decoration



10 TN ro TB Screw

Black phosphate self-drilling and self-tapping screws with countersunk Phillips heads for fixing plasterboard to metal framing. The fasteners are for use on steel thickness up to 0.7 mm.



3 hanger with lock

Hanger with lock allows quick and easy installation of suspended ceilings by using wire with eyelet. The hanger with lock simplifies further readjustment of the main carrying CD profiles leveling and thus helps to save time.



11 LN or LB Screw

Zinc coated self-drilling tips with low profile head for metal Fixing. Suitable use for light gauge up to 0.7 mm thick.



4 Direct Hanger

Used to install and attach Primary Knauf CD studs on the ceiling diaphragm. Max hanging distance 12cm and load bearing 25kg



12 K6/35

Hammer Fixings are light duty fixings which have a special thread lock design that prevents pre-expansion during transit installation and provides an option for faster fixing without screwdriver work



5 CD Channels

Cold formed steel sheet profile with C-shaped cross-section in accordance with EN 14195 for use as a main carrying channel or secondary furring channel of suspended ceilings



13 Fugagips

Gypsum paste used for jointing between gypsum boards. Creating a homogeneous mortar ready for immediate use without any additives



6 UD Profile

Cold formed steel sheet profiles with U-shaped cross-section in accordance with EN 14195 for use as edge or perimeter profile in suspended ceilings.



14 Fiber Mesh or Paper Tape

Self-adhesive tape for reinforcing joints by hand application. Knauf Joint Tape – Fiber Glass mesh is recommended on ceilings and to create the strongest joints Paper Joint tape used for reinforcing joints by hand application, it is recommended to ensure crack free joints on drywall systems.



7 Cross connector

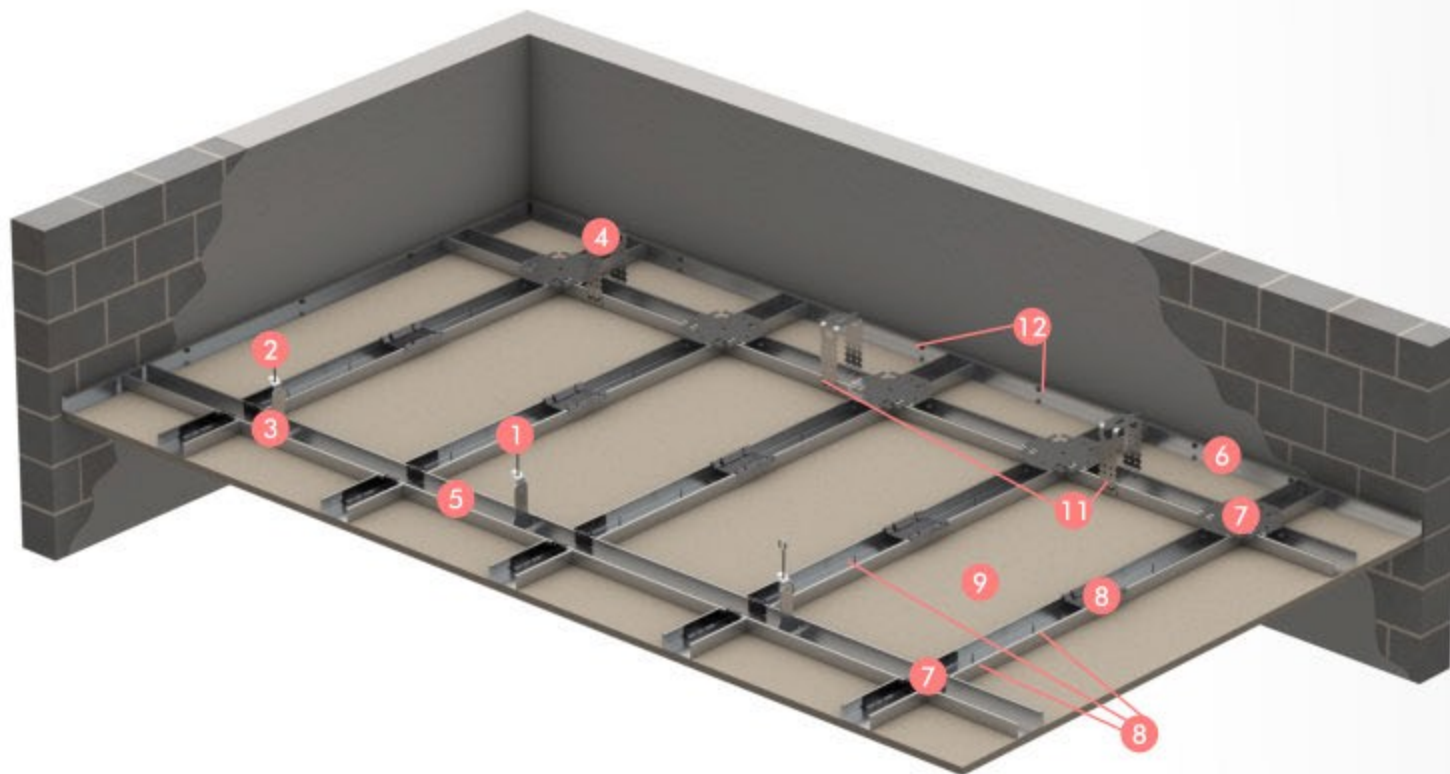
Used to attach the primary and secondary CD channels together



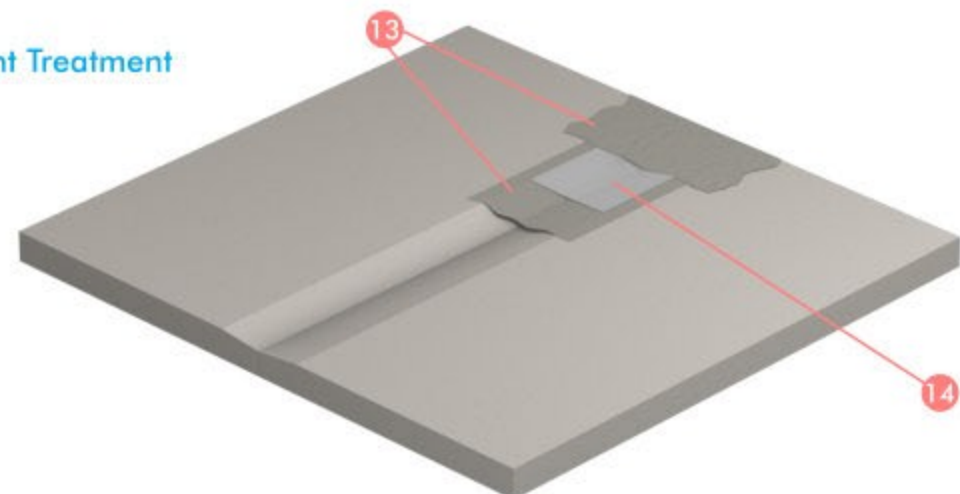
D113 | Flush Metal grid

The Knauf D113 Suspended Ceiling System with low installation height consists of a substructure made of steel sheet profiles CD 60/27 as basic and support profiles and a planking of gypsum boards. The decking system can be designed with or without fire protection in a variety of panels. This fire protection is available in the qualities F30 and F90.

Knauf boards are fixed with screws to a metal grid of flush carrying and furring channels made of sheet metal profiles CD 60/27. Anchoring of the grid is undertaken with suspenders on the basic ceiling. Low construction heights can be implemented using this system.



Joint Treatment



1 Screw Pin Fastener (Anchor/wedge)

Wedge anchor is a very easy to apply accessory which can be used as a best solution for suspending (hanging)(carrying) Knauf ceiling systems [D112,D113,ENBS and Tiles]. It can be used also in perimeter fixing for ceilings, and even for partitions where fire resistance is required.



8 M-Connector

Galvanized connector piece used for extending Knauf CD Channels in cases of long spanned ceilings



2 Wire With Eyelet

The wire with eyelet is a type of suspension that helps in leveling and accordingly can reach up to 4.5m depth. It loads up to 0.25 kN (25kg). In combination with the hanger with lock it offers quick installation and high flexibility.



9 Gypsum Board

Knauf wallboard is a plasterboard with an ivory/grey paper lining and is ideally suited to receive a plaster finish or a direct decoration



3 hanger with lock

Hanger with lock allows quick and easy installation of suspended ceilings by using wire with eyelet. The hanger with lock simplifies further readjustment of the main carrying CD profiles leveling and thus helps to save time.



10 TN or TB Screw

Black phosphate self-drilling and self-tapping screws with countersunk Phillips heads for fixing plasterboard to metal framing. The fasteners are for use on steel thickness up to 0.7 mm.



4 Direct Hanger

Used to install and attach Primary Knauf CD studs on the ceiling diaphragm. Max hanging distance 12cm and load bearing 25kg



11 LN or LB Screw

Zinc coated self-drilling tips with low profile head for metal Fixing. Suitable use for light gauge up to 0.7 mm thick.



5 CD Channels

Cold formed steel sheet profile with C-shaped cross-section in accordance with EN 14195 for use as a main carrying channel or secondary furring channel of suspended ceilings



12 K6/35

Hammer Fixings are light duty fixings which have a special thread lock design that prevents pre-expansion during transit installation and provides an option for faster fixing without screwdriver work



6 UD Profile

Cold formed steel sheet profiles with U-shaped cross-section in accordance with EN 14195 for use as edge or perimeter profile in suspended ceilings.



13 Fugagips

Gypsum paste used for jointing between gypsum boards. Creating a homogeneous mortar ready for immediate use without any additives



7 Universal Connector or Flush Connector

Used to attach the primary and secondary CD channels together



14 Fiber Mesh or Paper Tape

Self-adhesive tape for reinforcing joints by hand application. Knauf Joint Tape – Fiber Glass mesh is recommended on ceilings and to create the strongest joints Paper Joint tape used for reinforcing joints by hand application, it is recommended to ensure crack free joints on drywall systems.





Knauf Suspended Ceilings



Knauf Suspended Ceilings are high-end systems that are manufactured in compliance with international building standards. Knauf offers a range of versatile and decorative ceiling systems, including demountable and smart solutions. Solutions: D112/D113 following EN-DIN, Solution: ENBS following ENBS, tiles following EN standards. Whatever the requirement, there will be a Knauf ceiling system to meet it.

Used for all types of interior ceiling installations, Knauf has a comprehensive inventory of suspended ceiling components. We can apply a wide range of different types of Knauf gypsum board, selecting the optimum solution for each application. Knauf Suspended Ceiling systems are supported by metal grids consists of main carrying channels and secondary furring channels, creating a secure base, no matter what size or shape the ceiling may be.

Usage:

- Execution of various architectural designs.
- Decorative surface creation
- Concealing service and electrical wires after their installation.
- Hiding all concrete and main non-design related structural elements.
- Perfect solution for seismic requirements.
- Used in all types of interior ceiling installations: Entertainment, commercial, residential, administrative, shopping outlets, industrial, health care, hotels, educational, etc...

Optional Features:



Fire Resistant



Moisture Resistance



Sound insulation



Interior design

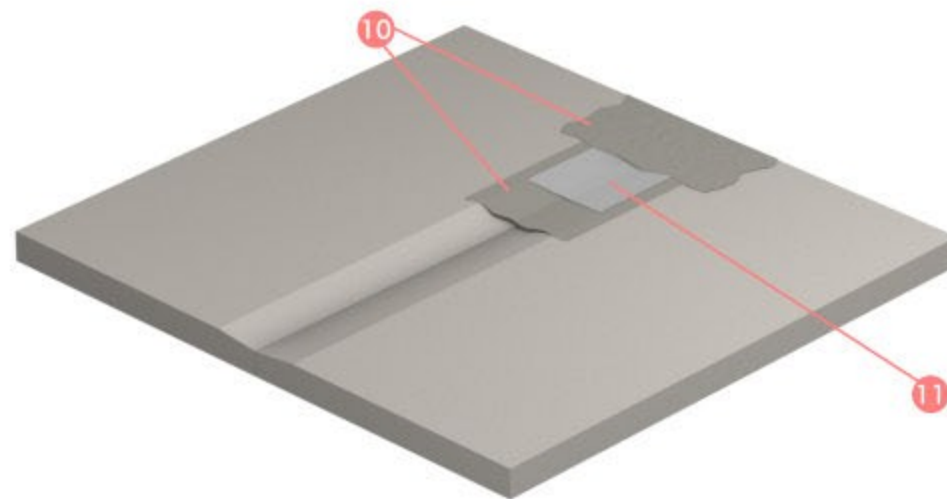
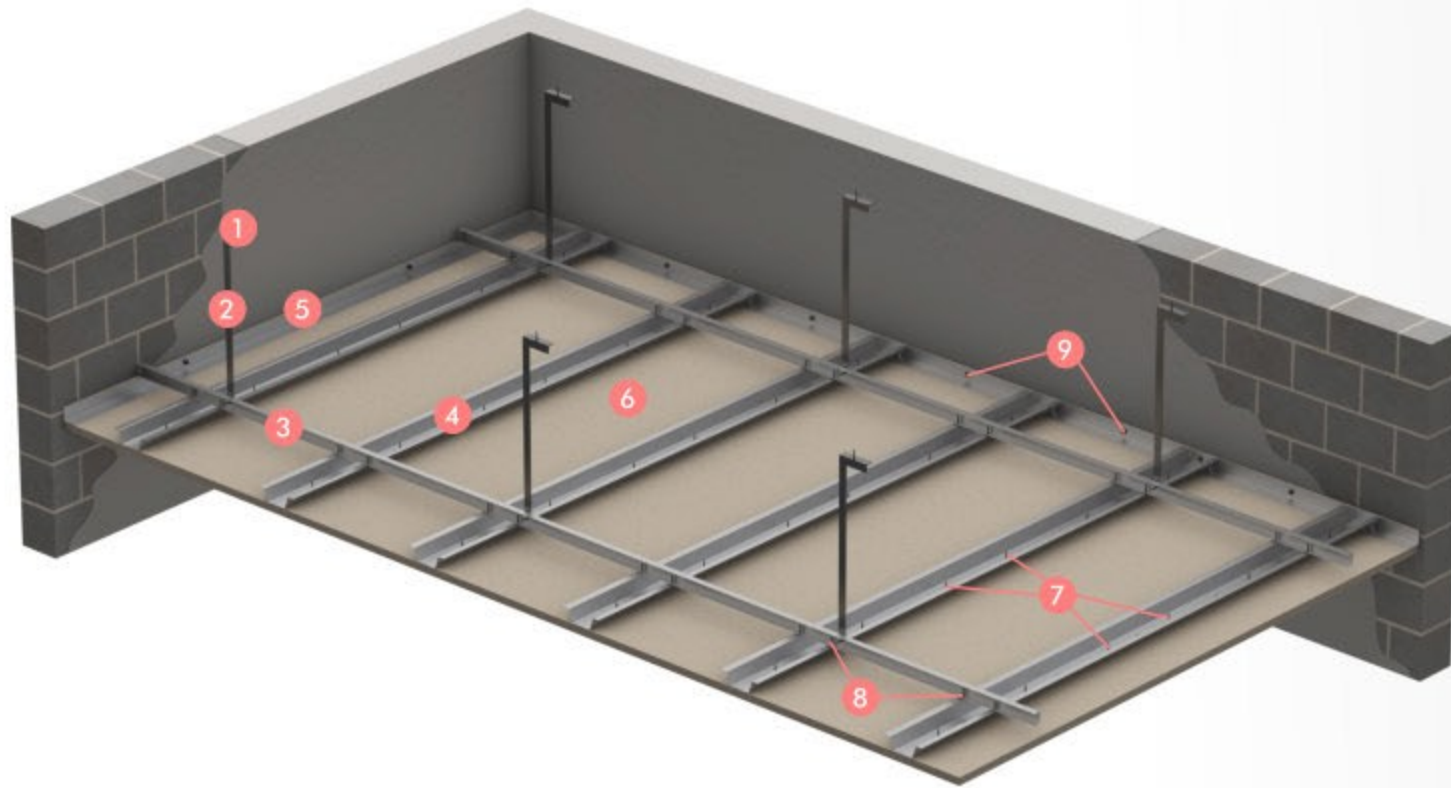
System Features:

- Convenient, easy, fast and dry application. (DIY)
- Lightweight system constructions.
- Low impact on the bearing structure.
- Adapts to movements of the building.
- Environmentally friendly and LEED certified.
- Saves in painting costs, with its seamless smooth surface
- Meet very high performance requirements with minimum accessories.
- Requires minimum storage area
- Saves on transportation and labor

	ENBS (Omega System)	Tiles
Brief Description	The Knauf ENBS is a Gypsum Board Suspended Ceiling System with metal grid consists of main/upper C38 carrying channels and secondary/lower hat furring (omega) channels. L profile as a perimeter angle.	The Knauf Tiles is a modular Gypsum Tiles 60x60 Suspended Ceiling System with metal grid consists of intersected lightweight T 24 grid. L profile as a perimeter angle.
Code	EN – BS Standards	EN Standards
Components	<ul style="list-style-type: none"> • Screw Pin Fastner • L-angle as a suspensions • C 38 Carrying channels • Omega Furring channels • L-angle as a perimeter angle • Gypsum board • TN or TB screw • LN or LB screw • K6/35 • Fugagips • Fiber Tape or Paper Tape 	<ul style="list-style-type: none"> • Screw pin fastner • Wire with eyelet • Hanger twist • Double connector • Main Tee 3.6 • Cross Tee 1.2 • Cross Tee 0.6 • L-angle • Gypsum Tile 60x60

ENBS (Omega System)

The Knauf ENBS is a Gypsum Board Suspended Ceiling System with metal grid consists of main/upper C38 carrying channels and secondary/lower hat furring (omega) channels. L profile as a perimeter angle.



1 Screw Pin Fastner (Anchor/wedge)

Wedge anchor is a very easy to apply accessory which can be used as a best solution for suspending (hanging)(carrying) Knauf ceiling systems [D112,D113,ENBS and Tiles]. It can be used also in perimeter fixing for ceilings, and even for partitions where fire resistance is required.



7 TN or TB Screw

Black phosphate self-drilling and self-tapping screws with countersunk Phillips heads for fixing plasterboard to metal framing. The fasteners are for use on steel thickness up to 0.7 mm.



2 L-angle As a Suspensions

Galvanized lightweight steel sections to be used as a perimeter framing and suspender for conventional drywall ceiling system. Knauf ceiling metal sections are cold-rolled from high-grade galvanized steel sheets



8 LN or LB Screw

Zinc coated self-drilling tips with low profile head for metal Fixing. Suitable use for light gauge up to 0.7 mm thick.



3 C 38 Carrying Channels

Upper C Channel that is carrying the accessories



9 K6/35

Hammer Fixings are light duty fixings which have a special thread lock design that prevents pre-expansion during transit installation and provides an option for faster fixing without screwdriver work



4 Omega Furring Channels

Galvanized lightweight steel sections to be used as furring channels for conventional drywall ceiling and wall lining systems. Deep dotting at the web allows for faster screwing times when cladding gypsum boards.



10 Fugagips

Gypsum paste used for jointing between gypsum boards. Creating a homogeneous mortar ready for immediate use without any additives



5 L-angle as a Perimeter Angle

Galvanized lightweight steel sections to be used as a perimeter framing and suspender for conventional drywall ceiling system. Knauf ceiling metal sections are cold-rolled from high-grade galvanized steel sheets



11 Fiber Mesh or Paper Tape

Self-adhesive tape for reinforcing joints by hand application. Knauf Joint Tape – Fiber Glass mesh is recommended on ceilings and to create the strongest joints Paper Joint tape used for reinforcing joints by hand application, it is recommended to ensure crack free joints on drywall systems.



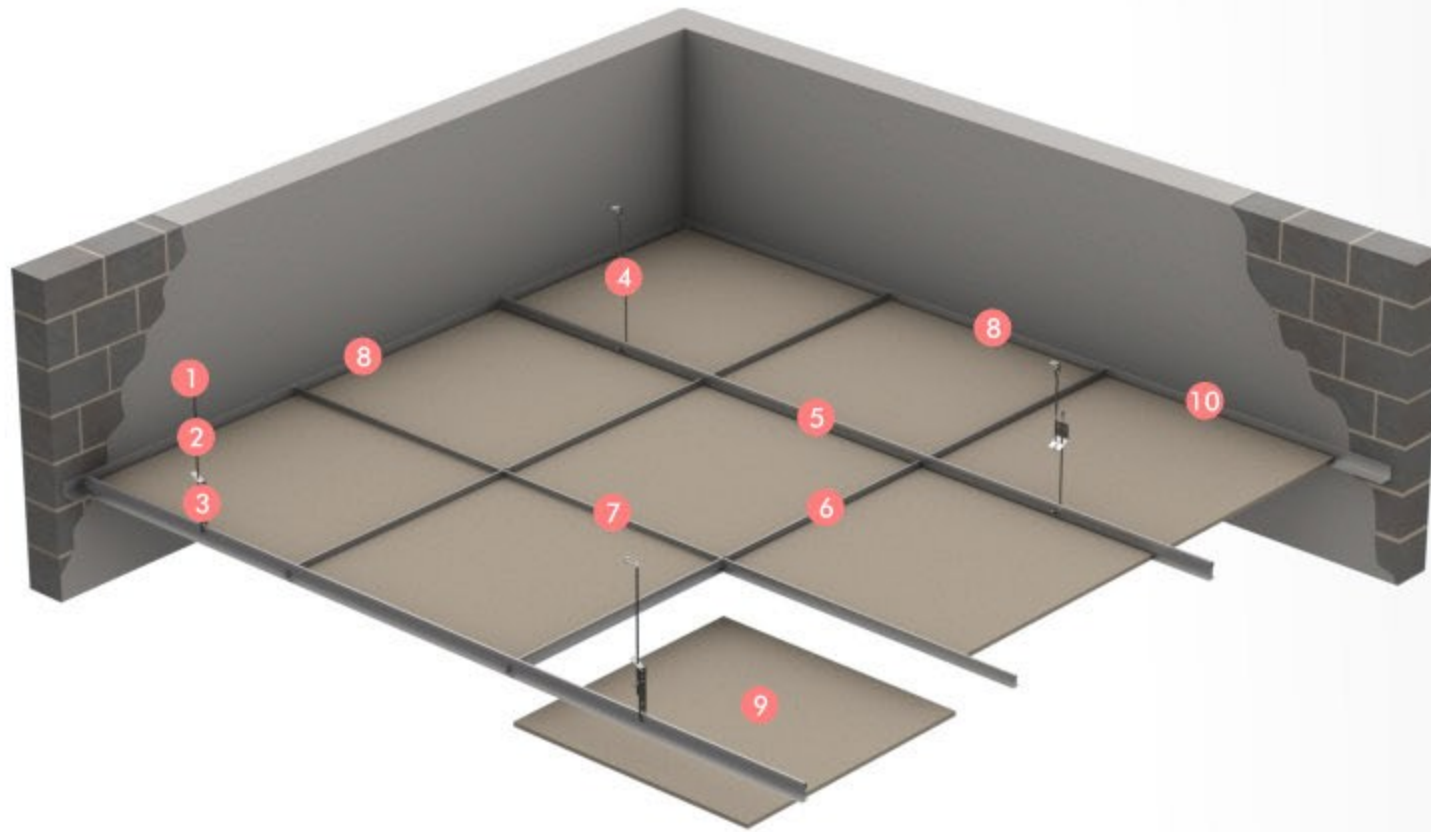
6 Gypsum Board

Knauf wallboard is a plasterboard with an ivory/grey paper lining and is ideally suited to receive a plaster finish or a direct decoration




Gypsum Tiles | (Tiles 60 x 60)

The Knauf Tiles is a modular Gypsum Tiles 60x60 Suspended Ceiling System with metal grid consisting of intersected lightweight T 24 grid. L profile as a perimeter angle.




- 1 Screw Pin Fastner**


Wedge anchor is a very easy to apply accessory which can be used as a best solution for suspending (hanging)(carrying) Knauf ceiling systems (D112,D113,ENBS and Tiles). It can be used also in perimeter fixing for ceilings, and even for partitions where fire resistance is required.


- 2 Wire With Eyelet**


The wire with eyelet is a type of suspension that helps in leveling and accordingly can reach up to 4.5m depth. It loads up to 0.25 kN (25kg). In combination with the hanger with lock it offers quick installation and high flexibility.


- 3 Hanger Twist**


Connects the T-main product with the hanging wire/wire with eyelet


- 4 Double Connector**


Adjustable clip and connects two hanging wires/wire with eyelett for extentions


- 5 Main Tee 3.6**


Main bearing T24 studs are attached to the ceiling with a double cleat and hanging wires


- 6 Cross Tee 1.2**


Intermediate bearing T-24 channels are installed on main T-Grid channels


- 7 Cross Tee 0.6**


Intermediate bearing T-24 channels are installed on main T-Grid channels


- 8 L-angle**

Supports the perimeter of the suspended ceiling to facilitate flush installation. L-Channels are installed on the wall on the bottom level of intermediate bearing T-24 channels


- 9 Gypsum Tile 60x60**

Knauf Gypsum Tiles 600x600 mm, laminated with paintable vinyl sheet in the front face, and covered with aluminum foil sheet in the back face.


- 10 K6/35**

Hammer Fixings are light duty fixings which have a special thread lock design that prevents pre-expansion during transit installation and provides an option for faster fixing without screwdriver work



Knaf Standard Partition Walls

Knaf Standard Partition Walls W111, W112, and W113 are non-load-bearing partition walls that are ideal for indoor installation due to their reliability, speed and cost-efficiency. These systems are composed of gypsum boards and metal framing, joint compounds and other materials such as joint tapes, screws and insulation.

The products alone do not provide performance, the performance is given by the complete assembled system. System performance is achieved on following the correct installation details. The smallest of details can have a large effect on the overall system performance. Variations in construction or materials specifications may reduce a system's fire and acoustic rating, structural capacity or other aspects of performance.

Usage:

- Ideal for high-rise building construction .
- Execution of various architectural designs.
- Decorative surfaces creations
- Maximizing space utilization
- Concealing service and electrical wires after their installation.
- Perfect solution for seismic requirements.
- Used in all types of interior ceiling installations: Entertainment, commercial, residential, administrative, shopping outlets, industrial, health care, hotels, educational ...etc.

Optional Features:



Fire Resistant



Moisture Resistance



Sound insulation



Interior design

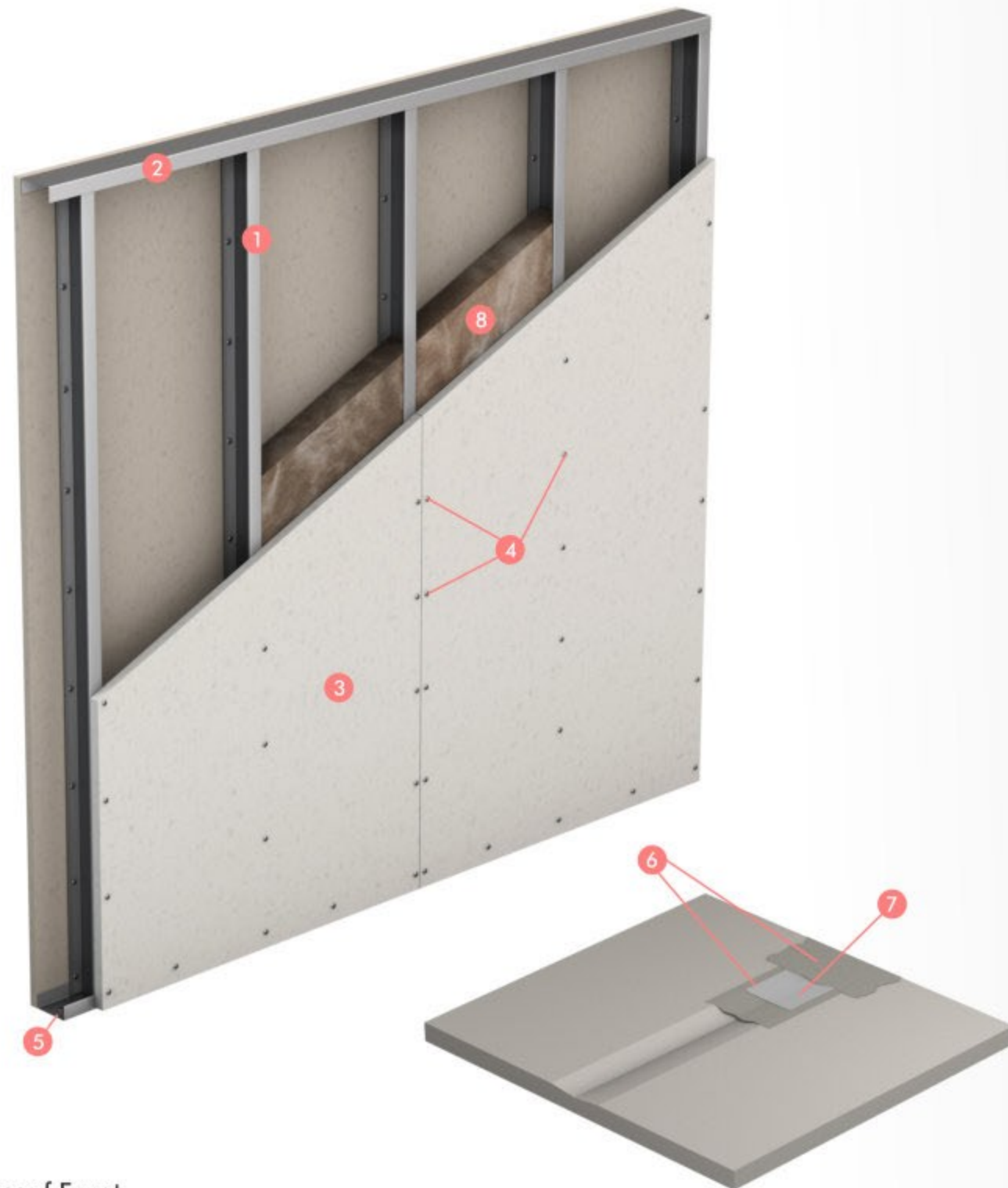
System Features:

- Convenient, easy, fast and dry application. (DIY)
- Post flooring application
- Lightweight system constructions.
- Low impact on the bearing structure
- Heavy duty walls
- Can achieve higher height partitions
- Adapts to movements of the building.
- Environmentally friendly and LEED certified.
- Saves in painting costs, with its seamless smooth surface
- Meet very high performance requirements with minimum accessories.
- Requires minimum storage area
- Saves on transportation and labor

	W111	W112	W113
Brief Description	Single Metal Stud Frame with Single Layer Cladding.	Single Metal Stud Frame with Double Layer Cladding	Single Metal Stud Frame with Triple Layer Cladding
Code	EN - DIN Standards	EN - DIN Standards	EN - DIN Standards
Components	<ul style="list-style-type: none"> • CW Studs • LW Runners • Gypsum Board • TN or TB screws • K6/35 • Fugagips • Fiber Tape or paper tape 	<ul style="list-style-type: none"> • CW • LW • Gypsum Board • TN or TB screws • K6/35 • Fugagips • Fiber Tape or paper tape 	<ul style="list-style-type: none"> • CW • LW • Gypsum Board • TN or TB screws • K6/35 • Fugagips • Fiber Tape or paper tape

W111 | Single metal stud frame, Single-layer cladding

The Knauf W111 Metal Partition Wall System is plastered with a layer of plasterboards on each side. The planking quality determines fire protection and soundproofing properties.



1

CW Studs

Cold-formed C shaped profiles friction fit at equal distances into the head and base UW channels to form the vertical metal stud frame



2

UW Runners

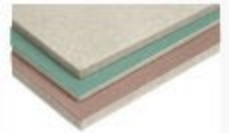
Cold-formed steel sheet profiles with U-shaped cross-section according to EN 14195, mainly for use as edge profile for walls and cantilevered ceilings.



3

Gypsum Board

Knauf wallboard is a plasterboard with an ivory/grey paper lining and is ideally suited to receive a plaster finish or a direct decoration



4

TN or TB screws

Black phosphate self-drilling and self-tapping screws with countersunk Phillips heads for fixing plasterboard to metal framing. The fasteners are for use on steel thickness up to 0.7 mm, TB for steel thickness more than 0.7 mm.



5

K6/35

Hammer Fixings are light duty fixings which have a special thread lock design that prevents pre-expansion during transit installation and provides an option for faster fixing without screwdriver work



6

Fugagips

Gypsum paste used for jointing between gypsum boards. Creating a homogeneous mortar ready for immediate use without any additives



7

Fiber Tape or paper tape

Self-adhesive tape for reinforcing joints by hand application. Knauf Joint Tape – Fiber Glass mesh is recommended on ceilings and to create the strongest joints. Paper Joint tape used for reinforcing joints by hand application, it is recommended to ensure crack free joints on drywall systems.



8

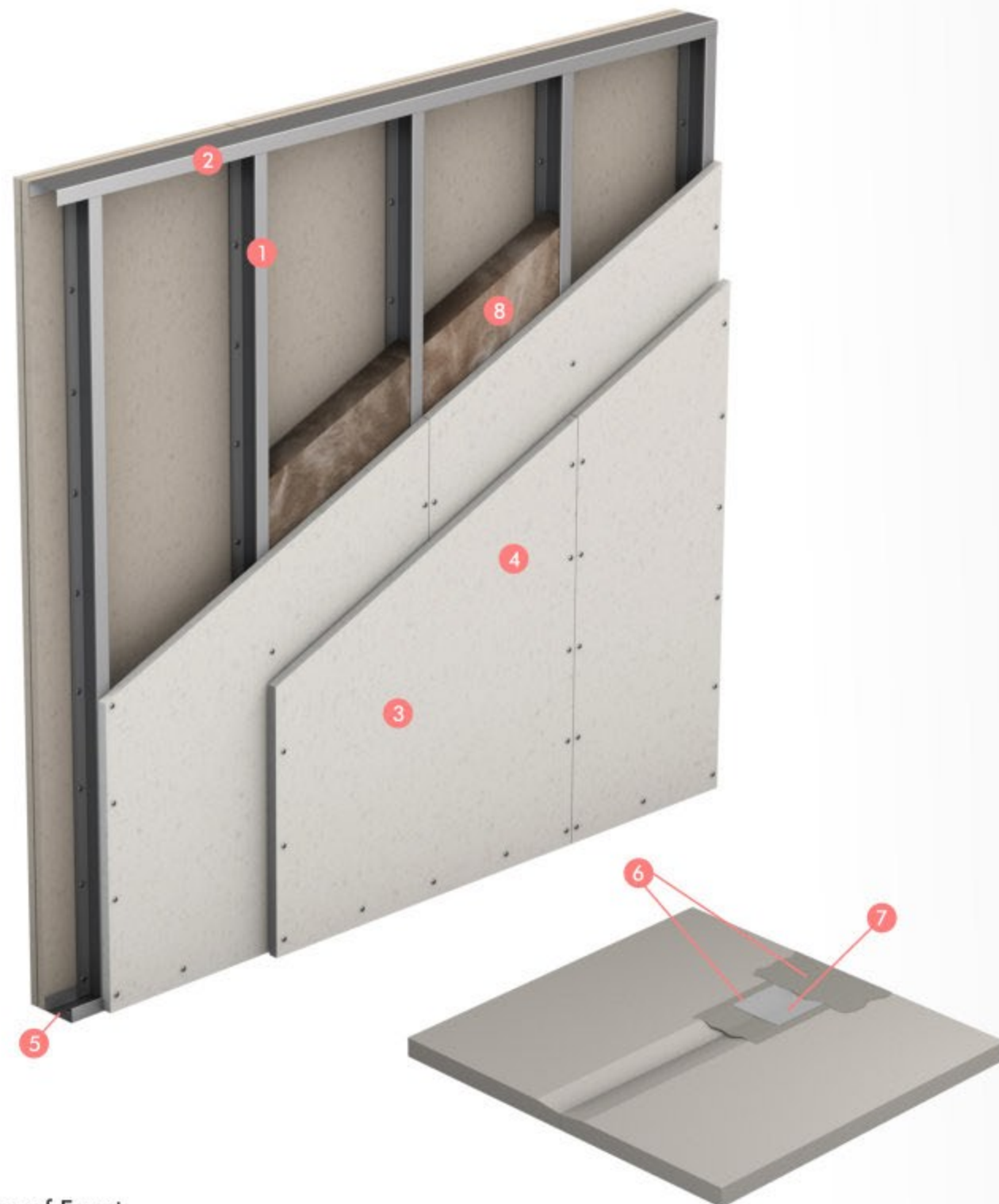
Insulation

Is rock mineral wool slabs that offer exceptional fire performance characteristics, as well as excellent thermal and acoustic properties and are scientifically designed to provide a very high level of compression resistance.



W112 | Single Metal Stud Frame, Double-Layer Cladding

The Knauf W112 Metal Partition Wall System is plastered with two layers of plasterboards on each side. The planking quality and the column structure determine fire protection and soundproofing properties as well as the robustness and ball-throw safety. Fire protection is available in the qualities F30 and F90.



1

CW Studs

Cold-formed C shaped profiles friction fit at equal distances into the head and base UW channels to form the vertical metal stud frame



2

UW Runners

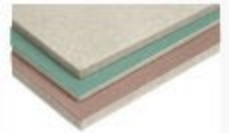
Cold-formed steel sheet profiles with U-shaped cross-section according to EN 14195, mainly for use as edge profile for walls and cantilevered ceilings.



3

Gypsum Board

Knauf wallboard is a plasterboard with an ivory/grey paper lining and is ideally suited to receive a plaster finish or a direct decoration



4

TN or TB screws

Black phosphate self-drilling and self-tapping screws with countersunk Phillips heads for fixing plasterboard to metal framing. The fasteners are for use on steel thickness up to 0.7 mm, TB for steel thickness more than 0.7 mm.



5

K6/35

Hammer Fixings are light duty fixings which have a special thread lock design that prevents pre-expansion during transit installation and provides an option for faster fixing without screwdriver work



6

Fugagips

Gypsum paste used for jointing between gypsum boards. Creating a homogeneous mortar ready for immediate use without any additives



7

Fiber Tape or paper tape

Self-adhesive tape for reinforcing joints by hand application. Knauf Joint Tape – Fiber Glass mesh is recommended on ceilings and to create the strongest joints. Paper Joint tape used for reinforcing joints by hand application, it is recommended to ensure crack free joints on drywall systems.



8

Insulation

Is rock mineral wool slabs that offer exceptional fire performance characteristics, as well as excellent thermal and acoustic properties and are scientifically designed to provide a very high level of compression resistance.



W113 | Single Metal Stud Frame, Triple-Layer Cladding

The Knauf W113 Metal Partition Wall System is planted with three layers of plasterboards on each side. The planking quality and the column structure determine fire protection and soundproofing properties as well as the robustness and ball-throw safety. Fire protection is available in the qualities F30 and F90.



1

CW Studs

Cold-formed C shaped profiles friction fit at equal distances into the head and base UW channels to form the vertical metal stud frame



2

UW Runners

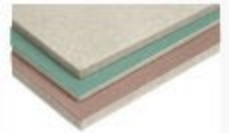
Cold-formed steel sheet profiles with U-shaped cross-section according to EN 14195, mainly for use as edge profile for walls and cantilevered ceilings.



3

Gypsum Board

Knauf wallboard is a plasterboard with an ivory/grey paper lining and is ideally suited to receive a plaster finish or a direct decoration



4

TN or TB screws

Black phosphate self-drilling and self-tapping screws with countersunk Phillips heads for fixing plasterboard to metal framing. The fasteners are for use on steel thickness up to 0.7 mm, TB for steel thickness more than 0.7 mm.



5

K6/35

Hammer Fixings are light duty fixings which have a special thread lock design that prevents pre-expansion during transit installation and provides an option for faster fixing without screwdriver work



6

Fugagips

Gypsum paste used for jointing between gypsum boards. Creating a homogeneous mortar ready for immediate use without any additives



7

Fiber Tape or paper tape

Self-adhesive tape for reinforcing joints by hand application. Knauf Joint Tape – Fiber Glass mesh is recommended on ceilings and to create the strongest joints. Paper Joint tape used for reinforcing joints by hand application, it is recommended to ensure crack free joints on drywall systems.



8

Insulation

Is rock mineral wool slabs that offer exceptional fire performance characteristics, as well as excellent thermal and acoustic properties and are scientifically designed to provide a very high level of compression resistance.





Knauf Partitions Wall Systems

W115 W116

Knauf W115 & W116 Partition Wall System consists of non-load-bearing partition walls that are ideal for indoor installation due to their reliability, speed and cost-efficiency.

Knauf W115 Inter-Apartment Partition Wall Systems are ideal as separating walls between apartments, and for areas that require enhanced sound insulation (hotel rooms, cinemas, etc.) due to their high sound-insulation values.

While, Knauf W116 Installation Wall Systems are ideal for indoor installation due to their reliability, speed and cost-efficiency. They are partition walls that contain M&E (mechanical and electrical) service lines.

Usage:

- Ideal for high-rise building construction.
- Execution of various architectural designs.
- Decorative surface creation.
- Maximizing space utilization.
- Concealing service and electrical wires after their installation.
- Perfect solution for seismic requirements.
- Used in all types of interior ceiling installations: Entertainment, commercial, residential, administrative, Shopping outlets, industrial, health care, hotels, educational ...etc.
- Knauf W115 Partition Wall Systems are used for hotel rooms and in areas where sound insulation is a significant priority. (cinemas, conference halls, theaters etc.).
- Knauf W116 Installation Wall Systems are ideal for concealing mechanical and electrical service lines such as lavatory, plumbing and sewage lines in moist rooms.

Optional Features:



Fire Resistant



Moisture Resistance



Sound insulation



Interior design

System Features:

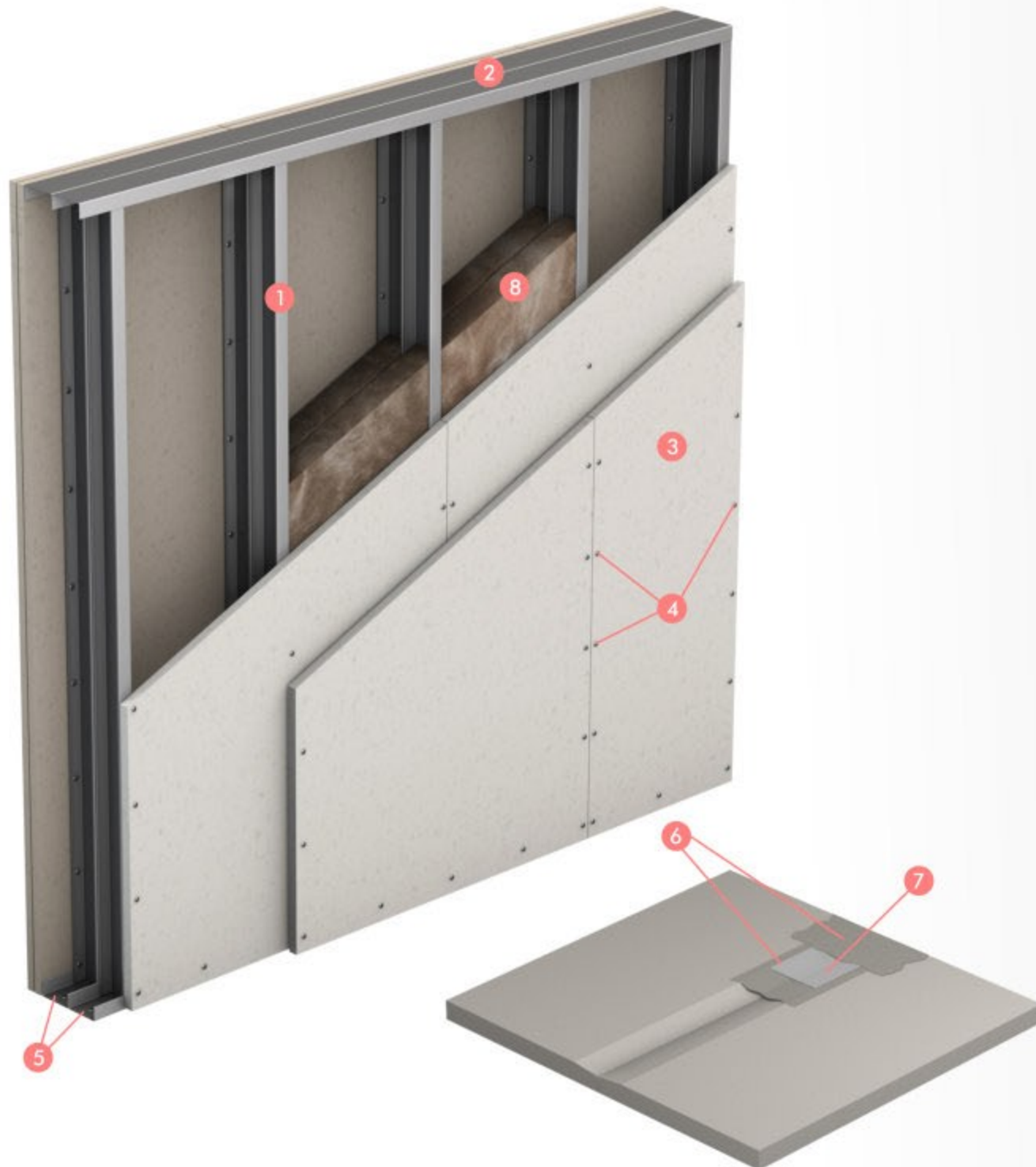
- Easy, fast and dry application. (DIY)
- Easily maintenance accessibility
- Lightweight system constructions.
- Low impact on the bearing structure
- Heavy duty walls
- Can achieve higher height partitions
- Adapts to movements of the building.
- Environmentally friendly and LEED certified.
- Saves in painting costs, with its seamless smooth surface
- Meets very high performance requirements with minimum accessories.
- Requires minimum storage area
- Saves on transportation and labor
- Controls sound insulation with different levels (W115)
- Significant maintenance accessibility (W116)
- With respect to W116, failures that might occur in the service lines are easy to repair: to access any point of failure in the lines, the Knauf Gypsum Board on it can be cut out carefully. After the repair work is completed, the cut-out gypsum board is reinstalled by using a coat of Knauf Plaster. Significant maintenance accessibility for building facilities infrastructure : mechanical and electrical work :
- With respect to W115, remarkable control on level of sound insulation.

	W115	W116
Brief Description	Double Metal Stud Frame in tangent double Layer Cladding for each side	Double metal stud frame in untangent double Layer Cladding for each side
Code	EN - DIN Standards	EN - DIN Standards
Components	<ul style="list-style-type: none"> • CW Studs • UW Runners • Gypsum Board • TN or TB screws • K6/35 • Fugagips • Fiber Tape or paper tape 	<ul style="list-style-type: none"> • CW Studs • UW Runners • Gypsum Board • TN or TB screws • K6/35 • Fugagips • Fiber Tape or paper tape

W115 | Double Metal Stud Frame, Double-Layer Cladding

Knauf W115 Inter-Apartment Partition Wall System has a double stand and is plastered with two layers of plasterboards on each side. The planking quality and the stand structure determine fire protection and soundproofing properties, robustness and possible installation height.

Knauf W115 Inter-Apartment Partition Wall Systems are ideal as separating walls between apartments, and for areas that require enhanced sound insulation (hotel rooms, cinemas, etc.) due to their high sound-insulation values. Fire protection is available in the quality F90.



1

CW Studs

Cold-formed C shaped profiles friction fit at equal distances into the head and base UW channels to form the vertical metal stud frame



2

UW Runners

Cold-formed steel sheet profiles with U-shaped cross-section according to EN 14195, mainly for use as edge profile for walls and cantilevered ceilings.



3

Gypsum Board

Knauf wallboard is a plasterboard with an ivory/grey paper lining and is ideally suited to receive a plaster finish or a direct decoration



4

TN or TB screws

Black phosphate self-drilling and self-tapping screws with countersunk Phillips heads for fixing plasterboard to metal framing. The fasteners are for use on steel thickness up to 0.7 mm, TB for steel thickness more than 0.7 mm.



5

K6/35

Hammer Fixings are light duty fixings which have a special thread lock design that prevents pre-expansion during transit installation and provides an option for faster fixing without screwdriver work



6

Fugagips

Gypsum paste used for jointing between gypsum boards. Creating a homogeneous mortar ready for immediate use without any additives



7

Fiber Tape or paper tape

Self-adhesive tape for reinforcing joints by hand application. Knauf Joint Tape – Fiber Glass mesh is recommended on ceilings and to create the strongest joints. Paper Joint tape used for reinforcing joints by hand application, it is recommended to ensure crack free joints on drywall systems.



8

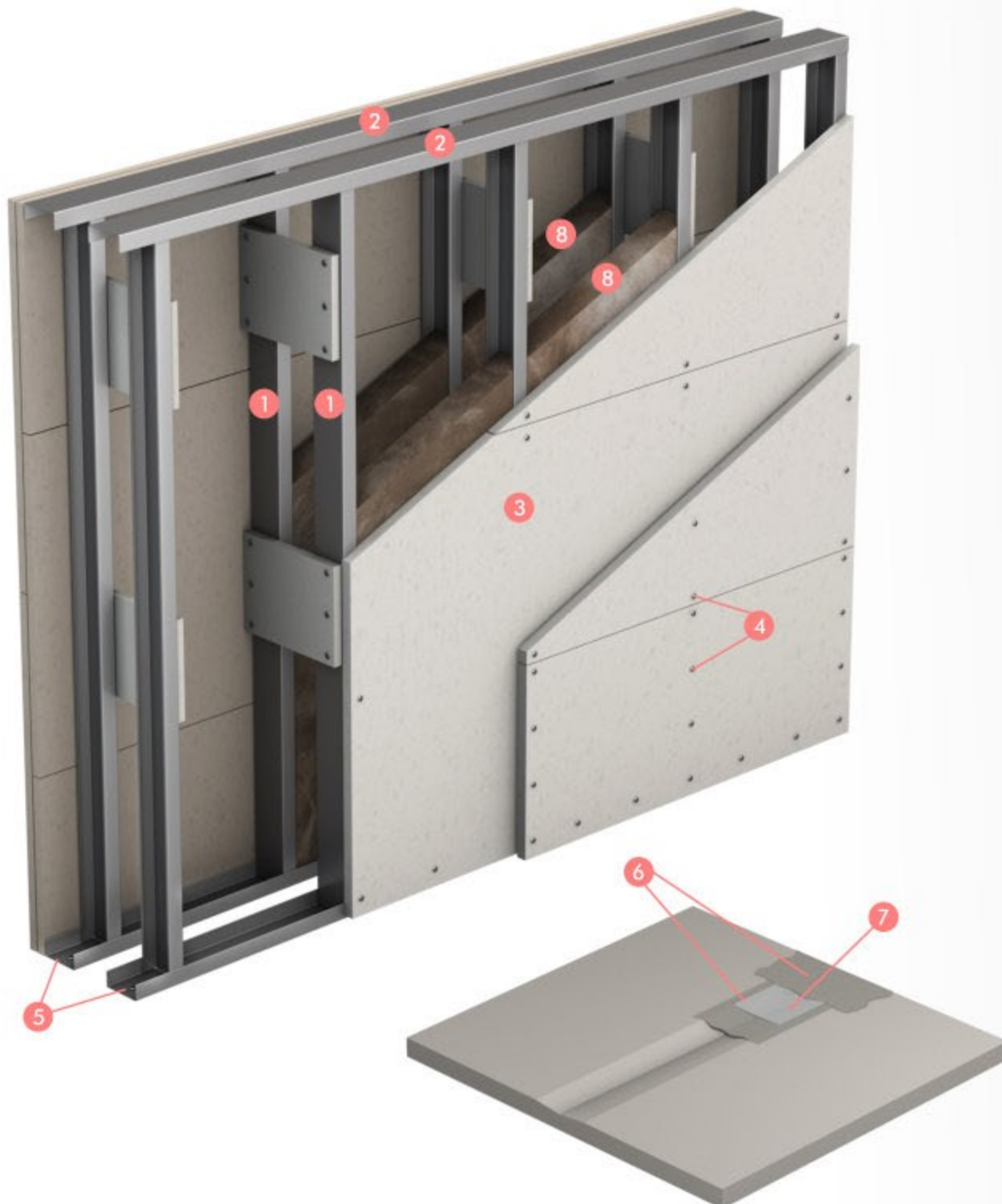
Insulation

Is rock mineral wool slabs that offer exceptional fire performance characteristics, as well as excellent thermal and acoustic properties and are scientifically designed to provide a very high level of compression resistance.



W116 | Double Metal Stud Frame, Single/Double-Layer Cladding

Knauf W116 Installation Wall Systems are ideal for indoor installation due to their reliability, speed and cost-efficiency. They are partition walls that contain M&E (mechanical and electrical) service lines and are ideal for concealing M&E service lines such as lavatory, plumbing and sewage lines in moist rooms where service lines should ideally remain unseen. Thus, space can be saved and a smooth, decorative appearance can be created in such rooms. Fire protection is available in the qualities is F30 and F90.



1

CW Studs

Cold-formed C shaped profiles friction fit at equal distances into the head and base UW channels to form the vertical metal stud frame



2

UW Runners

Cold-formed steel sheet profiles with U-shaped cross-section according to EN 14195, mainly for use as edge profile for walls and cantilevered ceilings.



3

Gypsum Board

Knauf wallboard is a plasterboard with an ivory/grey paper lining and is ideally suited to receive a plaster finish or a direct decoration



4

TN or TB screws

Black phosphate self-drilling and self-tapping screws with countersunk Phillips heads for fixing plasterboard to metal framing. The fasteners are for use on steel thickness up to 0.7 mm, TB for steel thickness more than 0.7 mm.



5

K6/35

Hammer Fixings are light duty fixings which have a special thread lock design that prevents pre-expansion during transit installation and provides an option for faster fixing without screwdriver work



6

Fugagips

Gypsum paste used for jointing between gypsum boards. Creating a homogeneous mortar ready for immediate use without any additives



7

Fiber Tape or paper tape

Self-adhesive tape for reinforcing joints by hand application. Knauf Joint Tape – Fiber Glass mesh is recommended on ceilings and to create the strongest joints. Paper Joint tape used for reinforcing joints by hand application, it is recommended to ensure crack free joints on drywall systems.



8

Insulation

Is rock mineral wool slabs that offer exceptional fire performance characteristics, as well as excellent thermal and acoustic properties and are scientifically designed to provide a very high level of compression resistance.





Knauf W62 Wall Cladding Systems

W623 W625

The W62 Systems are easy-to-install systems applied with minimum accessories that provides savings on transportation and labor.

Walls made of bricks, standard or reinforced concrete, CMU (combined masonry units) and other similar building materials can be lined with Knauf Wall Cladding Systems that use a variety of Knauf Gypsum Boards as lining.

Insulation material can be inserted between the gypsum boards where required. Knauf Gypsum Boards can be screw-attached to a metal furring. A smooth wall surface is achieved without the further application of gypsum plaster. All thermal and sound insulation and fire protection requirements as prescribed in International Standards are easily fulfilled and surpassed by Knauf Dry Lining Systems.

Knauf Dry Lining Systems with Metal Furring:

- W 623 Knauf Dry Lining with Metal Furring using CD studs
- W 625 Knauf Dry Lining with Metal Furring using Knauf CW studs

Usage:

- Ideal for high-rise building construction.
- Execution of various architectural designs.
- Maximizing space utilization
- Concealing service and electrical wires after their installation.
- Laying large pipelines and filling insulation materials due to large clear distance between cladding and wall base.
- Used in all types of interior ceiling installations: Entertainment, commercial, residential, administrative, shopping outlets, industrial, health care, hotels, educational, etc.

Optional Features:



Fire Resistant



Moisture Resistance



Sound insulation



Interior design

System Features:

- No need of pre-treatment of base wall surface.
- Significantly increases the thermal and sound insulation values of existing walls to provide insulation that easily complies with all international standards.
- Can be applied on all types of wall surfaces.
- It is an ideal solution that meets high requirements for the thermal insulation of exterior masonry walls.

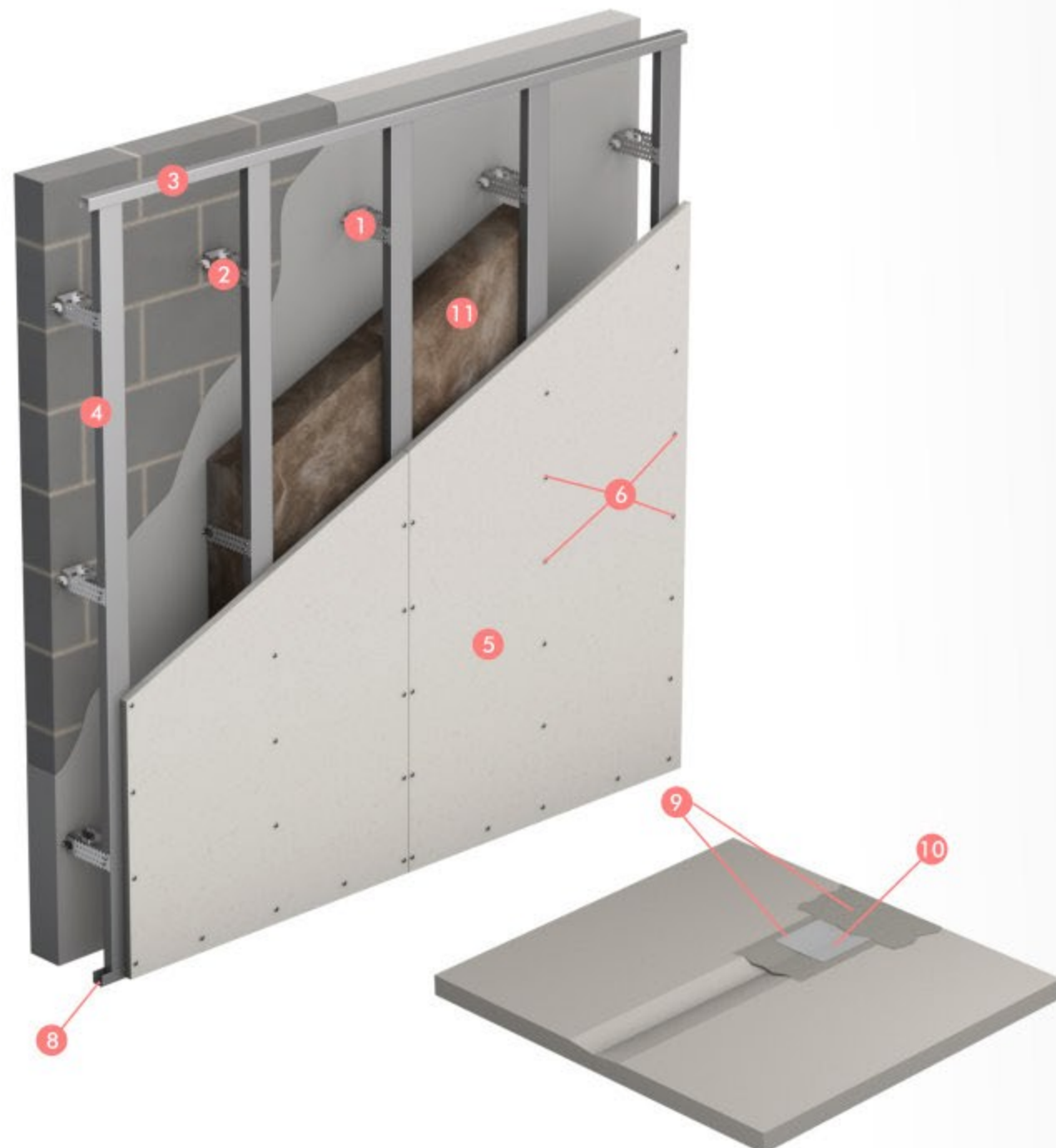
	W623	W625
Brief Description	The Knauf W623 Dry Lining System with Metal Furring significantly increases the thermal and sound insulation values of existing walls to provide insulation that easily complies with all international standards.	The Knauf W625 Dry Lining System is similar to the Knauf W111 Partition Wall System with the difference that the W625 System uses gypsum boards as cladding on one side only. The Knauf W625 System significantly increases both thermal and sound insulation values with international standards.
Code	EN - DIN Standards	EN - DIN Standards
Components	<ul style="list-style-type: none"> • Direct Hanger • CD Channels • UD Profile • M-Connector • Gypsum Board • TN or TB screws • LN or LB screw • K6/35 or K6/45 screw • K6/35 or K6/45 screw • Fiber mesh or paper tape • Insulation 	<ul style="list-style-type: none"> • CW Stands • UW Runners • Gypsum Board • TN or TB screws • K6/35 • Fugagips • Fiber Tape or paper tape • Insulation

W623 | Knauf Dry Lining with Metal Furring using CD studs

The W 623 Knauf Dry Lining with Metal Furring is distinguished by its slender overall structure and the large wall heights to be realized, due to the connection to the underlying background. For double-skinned construction, ball-throw safety is possible.

It significantly increases the thermal and sound insulation values of existing walls to provide insulation that easily complies with all international standards.

Also, CD used as a vertical studs for cladding system w623
Also, UD used as a perimeter profile or horizontal runners for cladding system w623



1 Direct Hanger
Used to install and attach Primary Knauf CD studs on the ceiling diaphragm. Max hanging distance 12cm and load bearing 25kg



7 LN or LB screw
Zinc coated self-drilling tips with low profile head for metal Fixing. Suitable use for light gauge up to 0.7 mm thick.



2 CD Channels
Cold formed steel sheet profile with C-shaped cross-section in accordance with EN 14195 for use as a main carrying channel or secondary furring channel of suspended ceilings, also used as a vertical studs for cladding system



8 K6/35
Hammer Fixings are light duty fixings which have a special thread lock design that prevents pre-expansion during transit installation and provides an option for faster fixing without screwdriver work.



3 UD Profile
Cold formed steel sheet profiles with U-shaped cross-section in accordance with EN 14195 for use as edge or perimeter profile in suspended ceilings, also UD used as a perimeter profile or horizontal runners for cladding system.



9 Fugagips
Gypsum paste used for jointing between gypsum boards. Creating a homogeneous mortar ready for immediate use without any additives



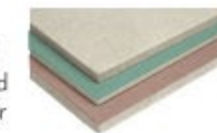
4 M-Connector
Galvanized connector piece used for extending Knauf CD Channels in cases of long spanned ceilings



10 Fiber Mesh or Paper Tape
Self-adhesive tape for reinforcing joints by hand application. Knauf Joint Tape – Fiber Glass mesh is recommended on ceilings and to create the strongest joints Paper Joint tape used for reinforcing joints by hand application, it is recommended to ensure crack free joints on drywall systems.



5 Gypsum Board
Knauf wallboard is a plasterboard with an ivory/grey paper lining and is ideally suited to receive a plaster finish or a direct decoration



11 Insulation
Is rock mineral wool slabs that offer exceptional fire performance characteristics, as well as excellent thermal and acoustic properties and are scientifically designed to provide a very high level of compression resistance.



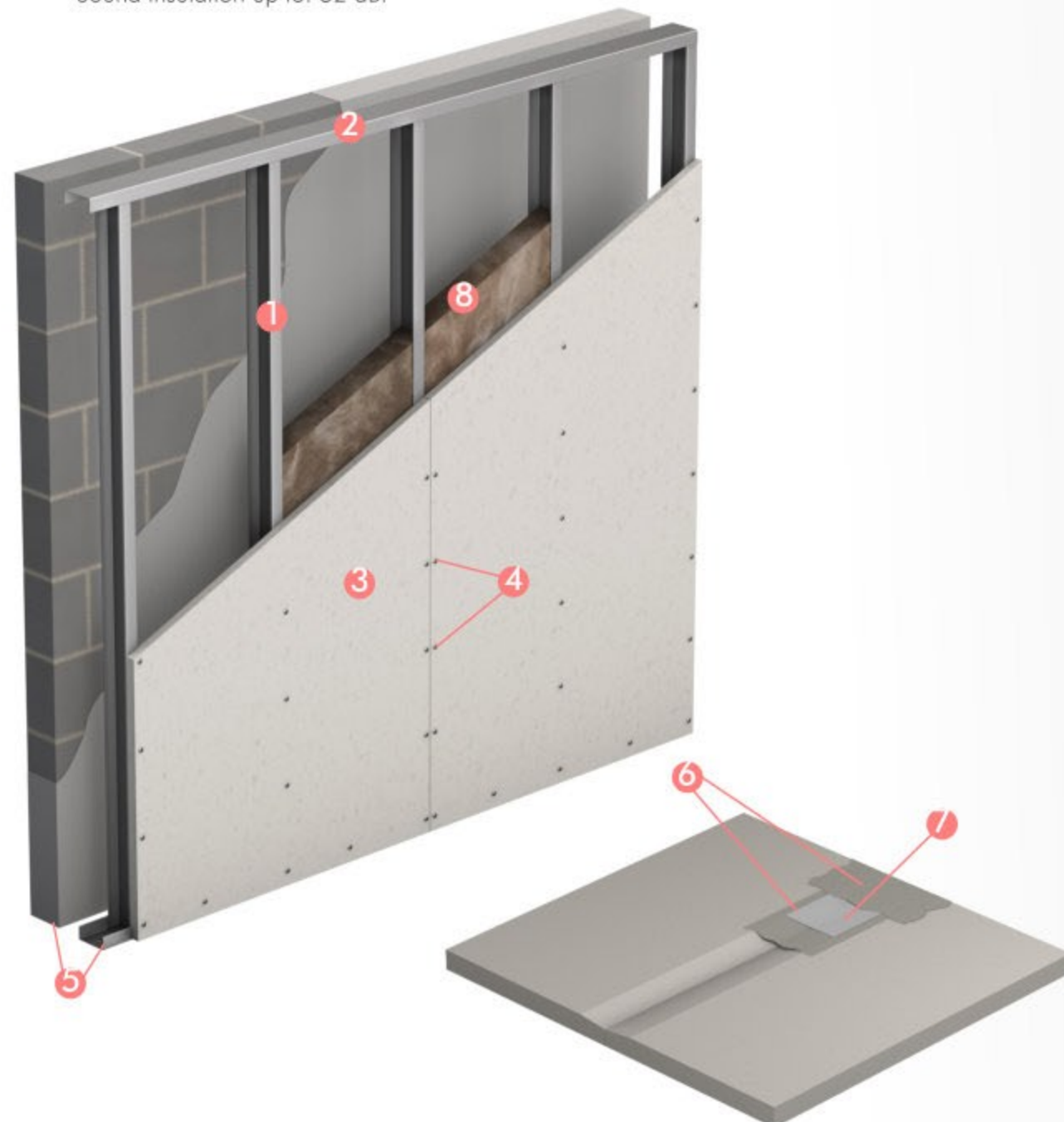
6 TN or TB Screw
Black phosphate self-drilling and self-tapping screws with countersunk Phillips heads for fixing plasterboard to metal framing. The fasteners are for use on steel thickness up to 0.7 mm, TB for steel thickness more than 0.7 mm.



W625 | Knauf Dry Lining with Metal Furring using Knauf CW studs

The W635 Wall Cladding System is designed as a slim system with an additional set plate position on the shaft side specifically for noise protection requirements.

- Metal stand UW as double profiles with position on the shaft side 12.5 mm Fire protection panels Knauf Piano
- Circumferential edge connections with UW profiles
- Ball-bearing safety on request
- Insulation layer required
- Vertical planking
- Wall height up to: 5.00 m
- Sound insulation up to: 52 dB.



1

CW Stands

Cold-formed C shaped profiles friction fit at equal distances into the head and base UW channels to form the vertical metal stud frame



2

UW Runners

Cold-formed steel sheet profiles with U-shaped cross-section according to EN 14195, mainly for use as edge profile for walls and cantilevered ceilings.



3

Gypsum Board

Knauf wallboard is a plasterboard with an ivory/grey paper lining and is ideally suited to receive a plaster finish or a direct decoration



4

TN or TB screws

Black phosphate self-drilling and self-tapping screws with countersunk Phillips heads for fixing plasterboard to metal framing. The fasteners are for use on steel thickness up to 0.7 mm, TB for steel thickness more than 0.7 mm.



5

K6/35

Hammer Fixings are light duty fixings which have a special thread lock design that prevents pre-expansion during transit installation and provides an option for faster fixing without screwdriver work



6

Fugagips

Gypsum paste used for jointing between gypsum boards. Creating a homogeneous mortar ready for immediate use without any additives



7

Fiber Tape or paper tape

Self-adhesive tape for reinforcing joints by hand application. Knauf Joint Tape – Fiber Glass mesh is recommended on ceilings and to create the strongest joints Paper Joint tape used for reinforcing joints by hand application, it is recommended to ensure crack free joints on drywall systems.



8

Insulation

Is rock mineral wool slabs that offer exceptional fire performance characteristics, as well as excellent thermal and acoustic properties and are scientifically designed to provide a very high level of compression resistance.



Knauf Vidiwall

Knauf Vidiwall are Gypsum fiber boards in a handy format for sloping roof, ceiling and wall. Knauf Vidiwall are used in all areas of interior design as planking in drywall systems.

Usage:

Suitable for the following systems:

- Ceiling coverings and undercoats
- Top floor garments
- Metal standing walls
- Wooden standing walls (not standing)

Optional Features:



Fire Resistant



Moisture Resistance



Sound insulation



Impact Resistance



Interior design

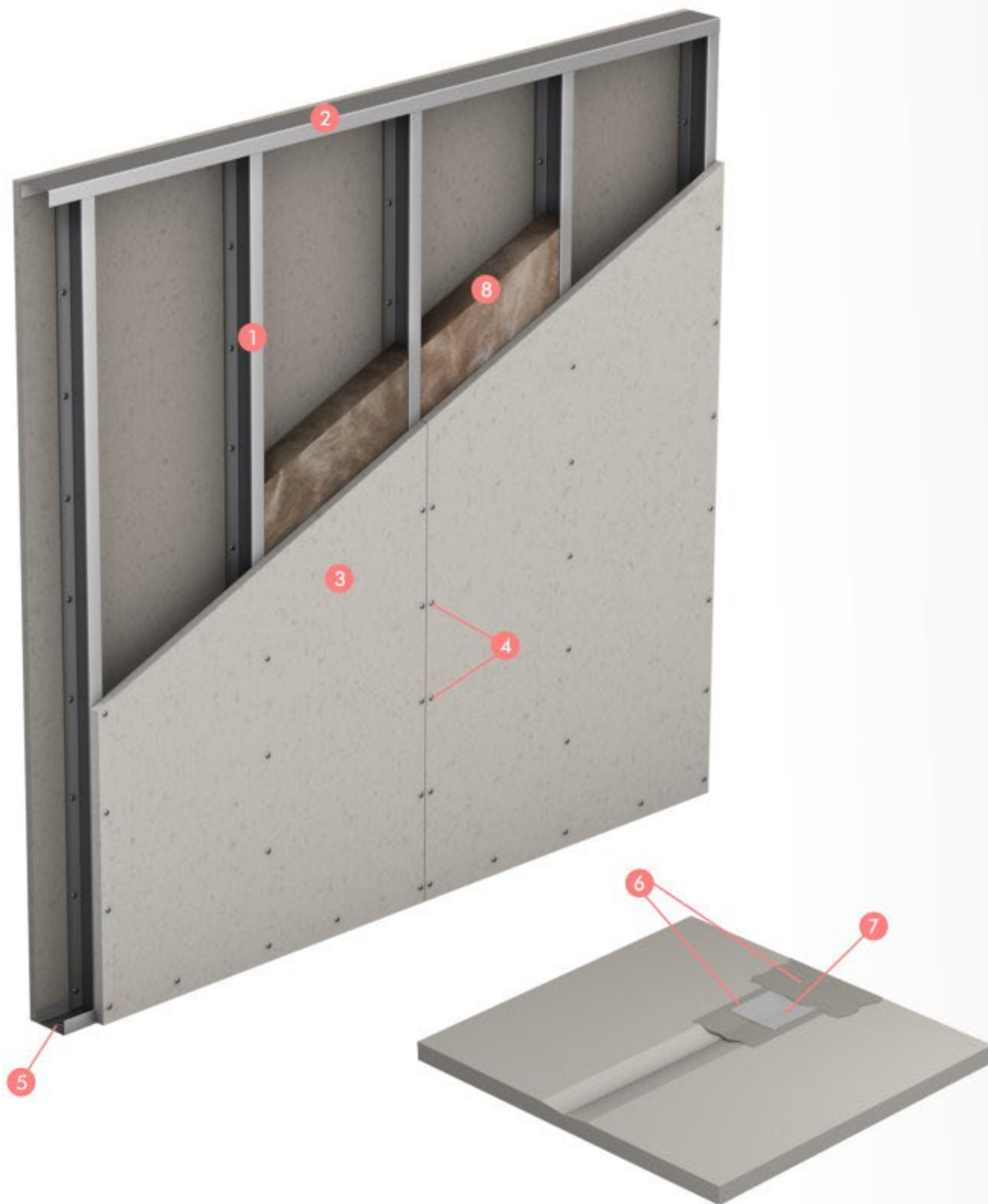
System Features:

- Small, handy format
- Easy and fast one-man assembly
- Universally applicable
- High strength
- Also for damp rooms
- Non-flammable



Vidiwall | W631 Knauf Vidiwall Metal stud Partition - Single metal stud frame, single layer cladding

Knauf Vidiwall are Gypsum fiber boards in a handy format for sloping roof, ceiling and wall. Knauf Vidiwall is used in all areas of interior design as planking in drywall systems. It is manufactured according to the gypsum fibre board technology.



1

CW Stands

Cold-formed C shaped profiles friction fit at equal distances into the head and base UW channels to form the vertical metal stud frame



2

UW Runners

Cold-formed steel sheet profiles with U-shaped cross-section according to EN 14195, mainly for use as edge profile for walls and cantilevered ceilings.



3

Vidiwall Board

The vidiwall gypsum fibreboards are composed of high quality calcinated gypsum and selected paper fibres



4

VN Screw

With a tapered head and double thread with different steps; metal profiles with a thickness of 0,7 mm;



5

K6/35

Hammer Fixings are light duty fixings which have a special thread lock design that prevents pre-expansion during transit installation and provides an option for faster fixing without screwdriver work



6

Fugagips

Gypsum paste used for jointing between gypsum boards. Creating a homogeneous mortar ready for immediate use without any additives



7

Paper Tape (No fiber tape)

Paper Joint tape used for reinforcing joints by hand application, it is recommended to ensure crack free joints on drywall systems.



8

Insulation

Is rock mineral wool slabs that offer exceptional fire performance characteristics, as well as excellent thermal and acoustic properties and are scientifically designed to provide a very high level of compression resistance.





The Knauf AQUAPANEL® Exterior Wall is an advanced performance exterior wall system which is built using drywall techniques. Knauf Exterior Wall is a “sandwich panel” construction, built up from diverse layers and other components. The AQUAPANEL® Cement Board Outdoor forms the outer layer, just beneath the cladding or other surface material.

Optional Features:

 Fire Resistant	 Moisture Resistance	 Sound insulation
 Impact Resistance	 Interior design	 Mold Resistant

Usage:

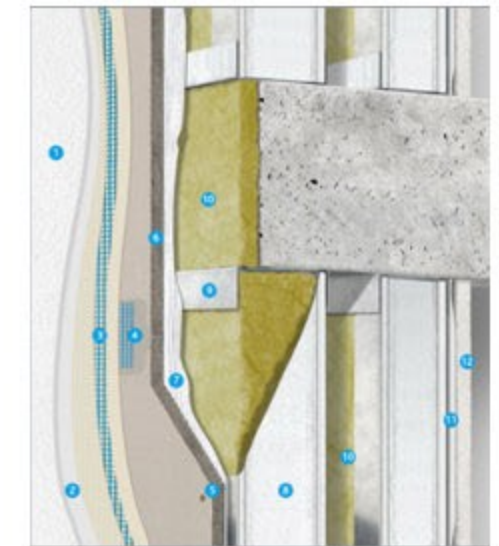
- Residential : For residential buildings, requiring significant space gains.
- Public: For buildings exteriors that requires incorporating bold curves and design elements
- Commercial: Effective in boosting companys green credentials if required
- It enables dryliners to extend areas of expertise to include the façade.

System Features:

- Fast and easy to build (Faster construction time compared to brick and block.)
- Can be cut to shape using “score and snap” technique
- Can be bent when dry - up to 1 metre bending radius
- Weather and water-resistant
- Simple and easy to install
- Strong, robust, impact-resistant and non-combustible
- One-third slimmer than brick or block walls delivering the same U-value and energy efficiency
- Up to 8% extra interior room due to the thinner width of the materials.

System Components:

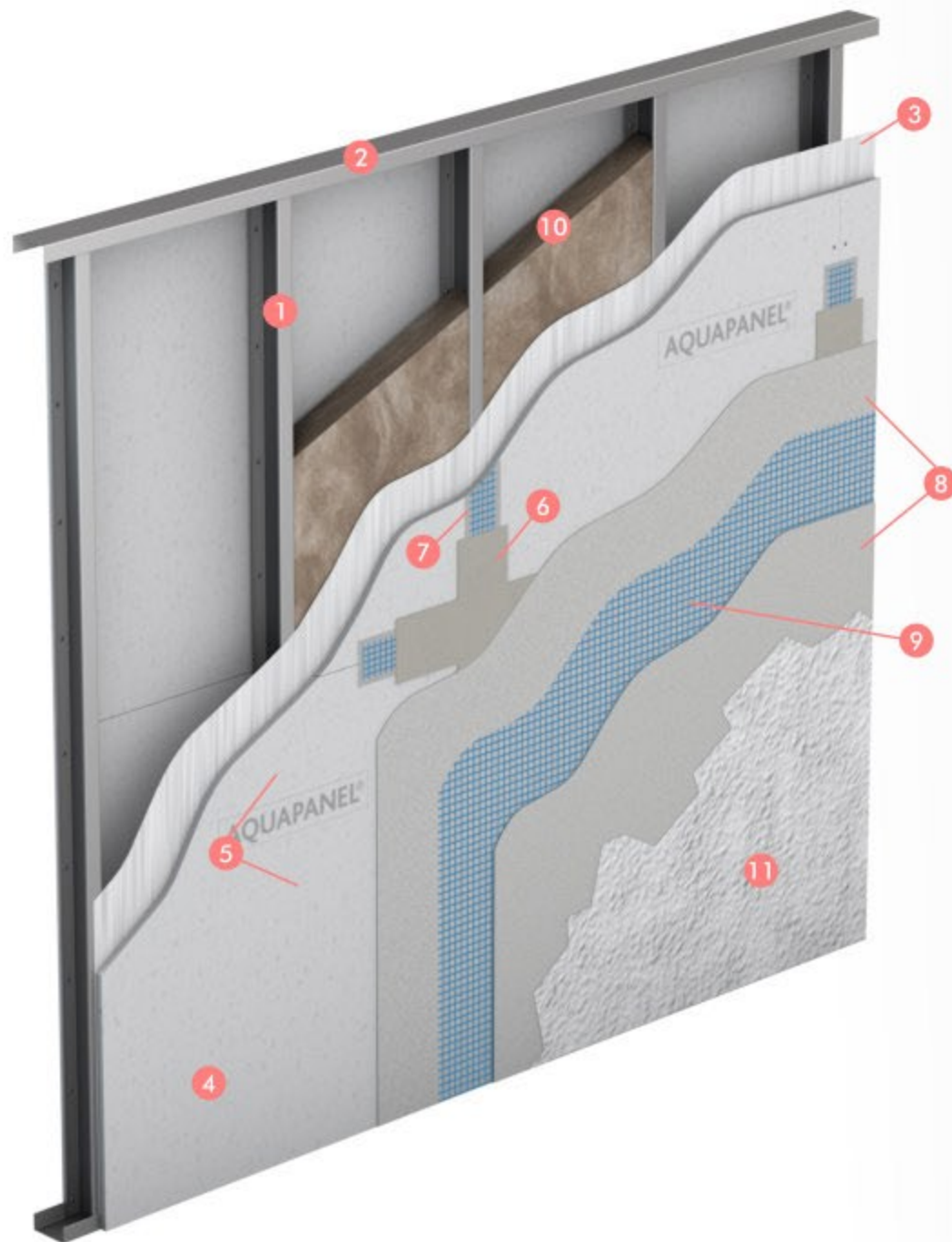
1. AQUAPANEL® Exterior Render
2. AQUAPANEL® Basecoat Primer
3. AQUAPANEL® Exterior Basecoat – white plus AQUAPANEL® Reinforcing Mesh
4. AQUAPANEL® Joint Filler – grey plus Tape (10cm)
5. AQUAPANEL® Maxi Screw
6. AQUAPANEL® Cement Board Outdoor
7. AQUAPANEL® Tyvek Water-Resistive Barrier
8. Knauf CW Metal Profile (Corrosion-resistant)
9. Knauf UW Metal Profile (Corrosion-resistant)
10. Knauf Insulation Stone Wool 035
11. Knauf Insulation Vapour Control Layer LDS 100 and Sealant Tape LDS
12. Knauf Gypsum Board



Aquapanel | Aquapanel Exterior Systems

AQUAPANEL Cement Board Outdoor is a robust, non-combustible building panel made of aggregated Portland cement with coated glass fibre mesh embedded in back and front surfaces. It offers all the benefits of a dry panel system with the strength of brick and block.

The ends are cut square and edges are reinforced for extra strength (the EasyEdge). The panel provides a solid base that withstands extreme weather conditions.



1

CW Stands

Cold-formed C shaped profiles friction fit at equal distances into the head and base UW channels to form the vertical metal stud frame



6

Joint filler

AQUAPANEL® Joint Filler – grey is a cement-bound filling material for full-surface skim coating of joints by hand. The joints are reinforced with



2

UW Runners

Cold-formed steel sheet profiles with U-shaped cross-section according to EN 14195, mainly for use as edge profile for walls and cantilevered ceilings.



7

Aqua panel joints tape

AQUAPANEL® Tape is used to reinforce joints on ceilings in interior areas and on walls and ceilings in exterior



3

"AQUAPANEL® Tyvek®

StuccoWrap™ is a moisture-permeable water barrier for cement board systems, developed for water-managed systems. It is installed as a water conducting layer directly behind the board layer.



8

Basecoat

It is used when basecoating AQUAPANEL® Cement Board Outdoor when finishing with a thin layer of decorative render



4

Cement Board-Aquapanel

AQUAPANEL® Cement Board is a very stable and resilient material for indoor and outdoor applications. It provides a solid and dry surface that can withstand both high humidity and direct contact with water



9

Reinforcement Mesh

AQUAPANEL® Exterior Reinforcing Mesh is a wide-mesh glass fabric designed to resist sliding.



5

SN or SB Maxi Screw

AQUAPANEL® Maxi Screws have been specially developed for fixing AQUAPANEL® Cement Board on to timber and metal frameworks of differing thicknesses



10

Insulation

Is rock mineral wool slabs that offer exceptional fire performance characteristics, as well as excellent thermal and acoustic properties and are scientifically designed to provide a very high level of compression resistance.



11

Painting and Finishing